
INTRODUCTION

This section contains listings of field replaceable parts, manufacturer's recommended spare parts, and accessories.

FIELD REPLACEABLE PARTS LIST

This listing is divided into four columns:

- INDEX NO - The numbers in this column correspond to the numbers shown within the facing page illustration.

- PART NUMBER - Contains one of the following:
 1. Eight digit part number - use this number to order a replacement part. Within the continental U.S., parts may be ordered from Control Data Corporation, World Distribution Center, 304 North Dale St., St. Paul, MN, 55103, Telephone 612-292-2200.

 2. Optional - parts which are not used in all applications. To determine usage in a particular equipment, you must first know the Equipment Package part number (refer to Equipment Configuration in Section 1 of this manual for definition and location of this number) and then refer to table 4-1. Table 4-1 contains the Equipment Package part number (the first 6 digits are on line 1, and the last 2 digits are on line 2) and a list of optional parts. If an optional part is used in a particular Equipment Package, "XX" will appear in that column.

 3. Spare - indicates that the item is a manufacturer's recommended spare part. Refer to table 4-2 for replacement part number information.

(

(

(

(

(

(

(

- **PART DESCRIPTION** - Contains part nomenclature/description. If an item is indented more than the previous item, it indicates it is part of the previous item (assembly).
- **NOTE** - Usually contains entries to define differences between machine configurations (i.e., model differences, older units vs newer units, etc.).

MANUFACTURER'S RECOMMENDED SPARE PARTS

This listing (table 4-2) is divided into three columns:

- **DESCRIPTION/NOTES** - Contains the part nomenclature/description and other pertinent information.
- **PART NUMBER** - Contains the part number of the part when the unit was manufactured.
- **REPLACEABLE PART NUMBER** - Contains the interchangeable replacement part number.

ACCESSORIES

This listing (table 4-3) contains the following:

- **PART NUMBER** - Use this number to order this part. See Field Replaceable Parts List for ordering information.
- **DESCRIPTION** - Contains the part nomenclature/description.

LOCATOR 1

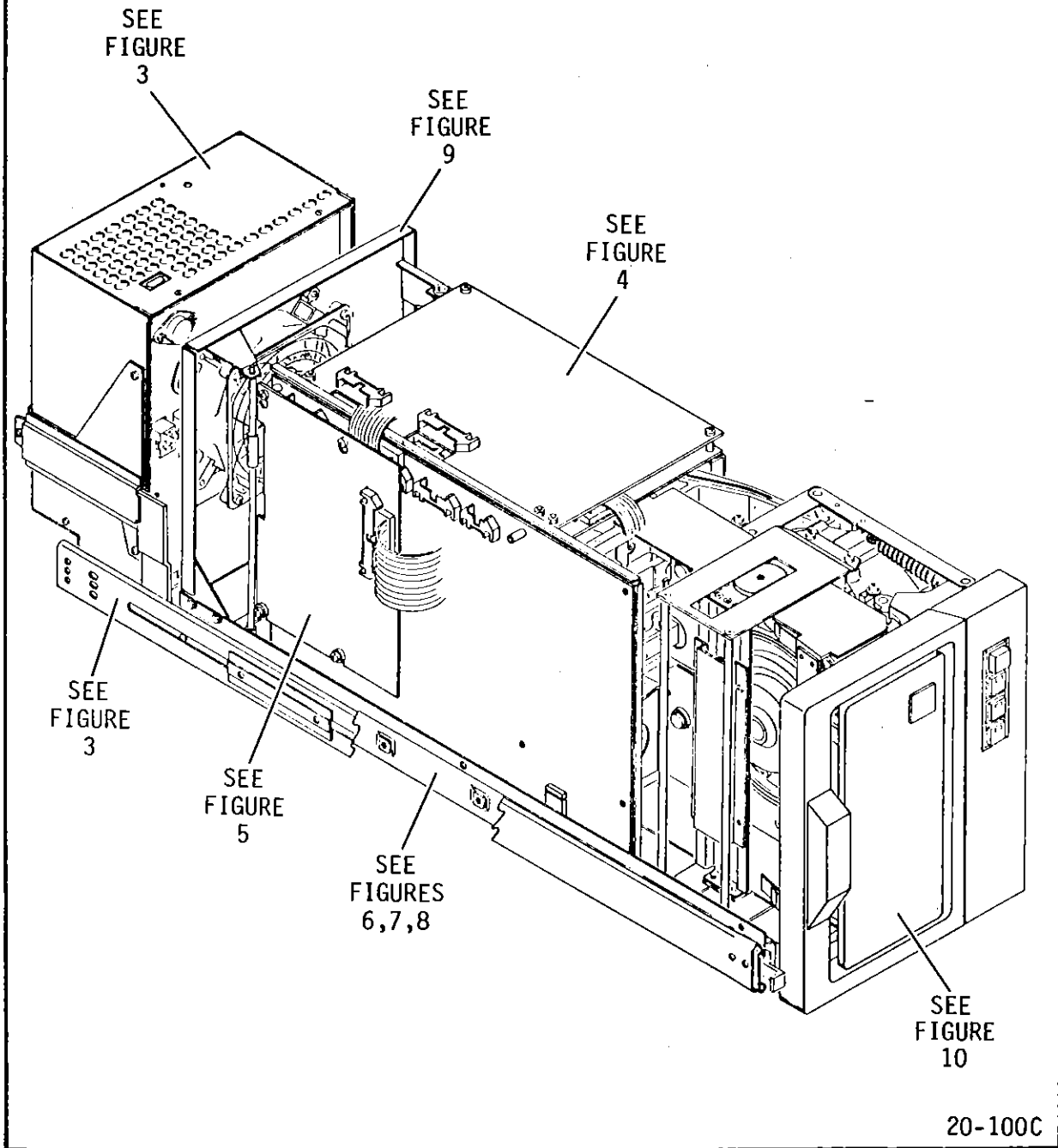


Figure 4-1

LOCATOR 2

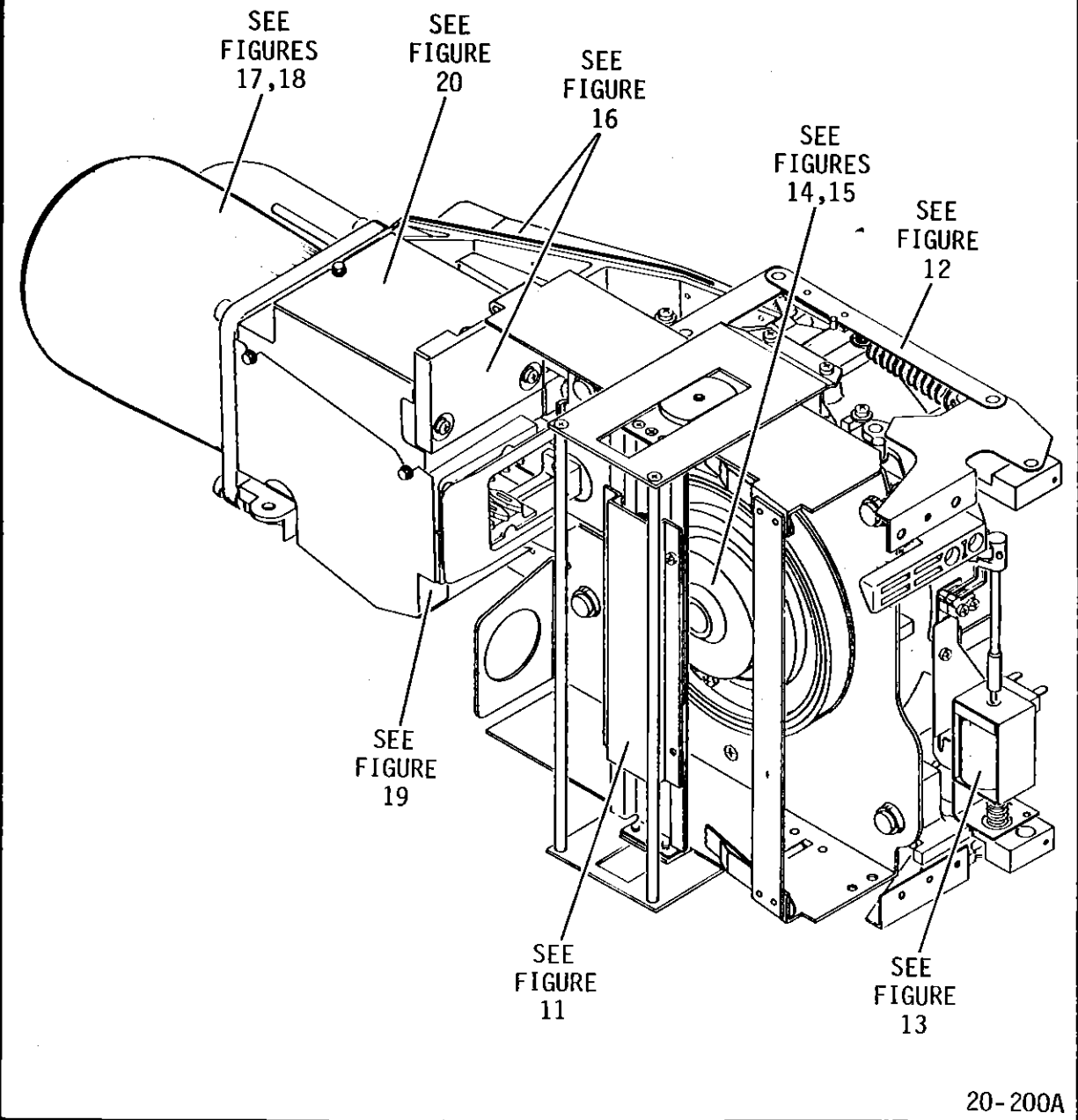
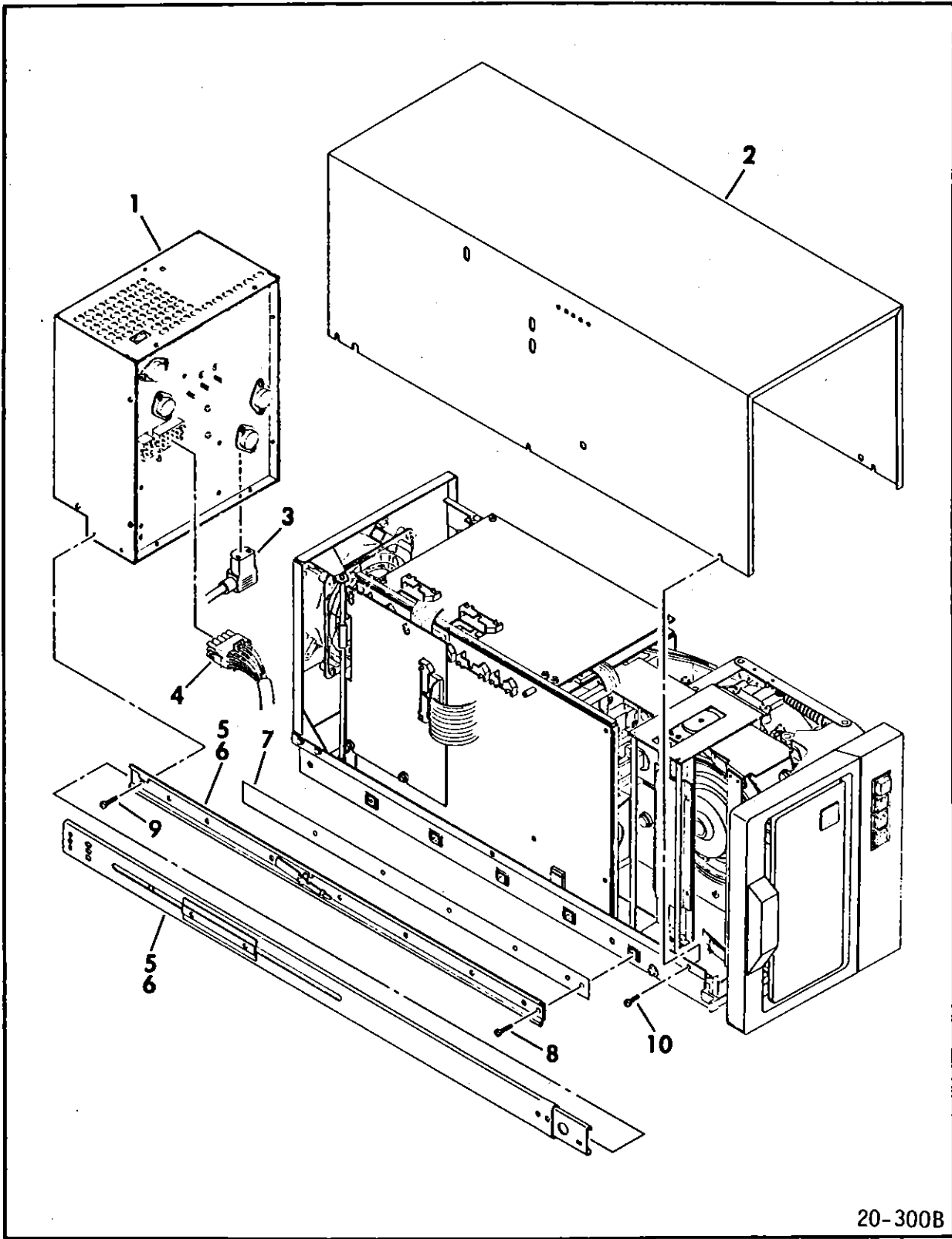


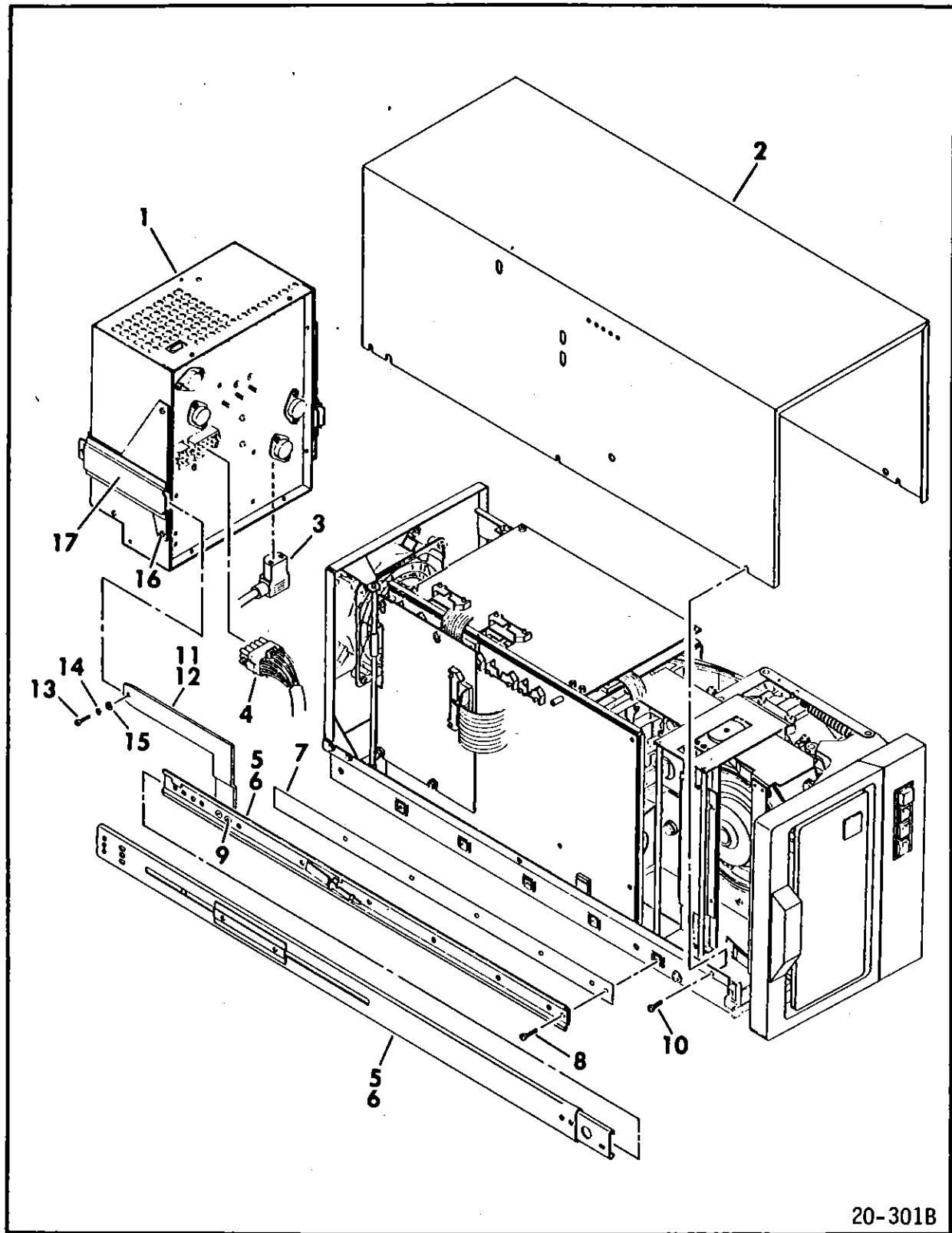
Figure 4-2



20-300B

Figure 4-3 (Older Units)

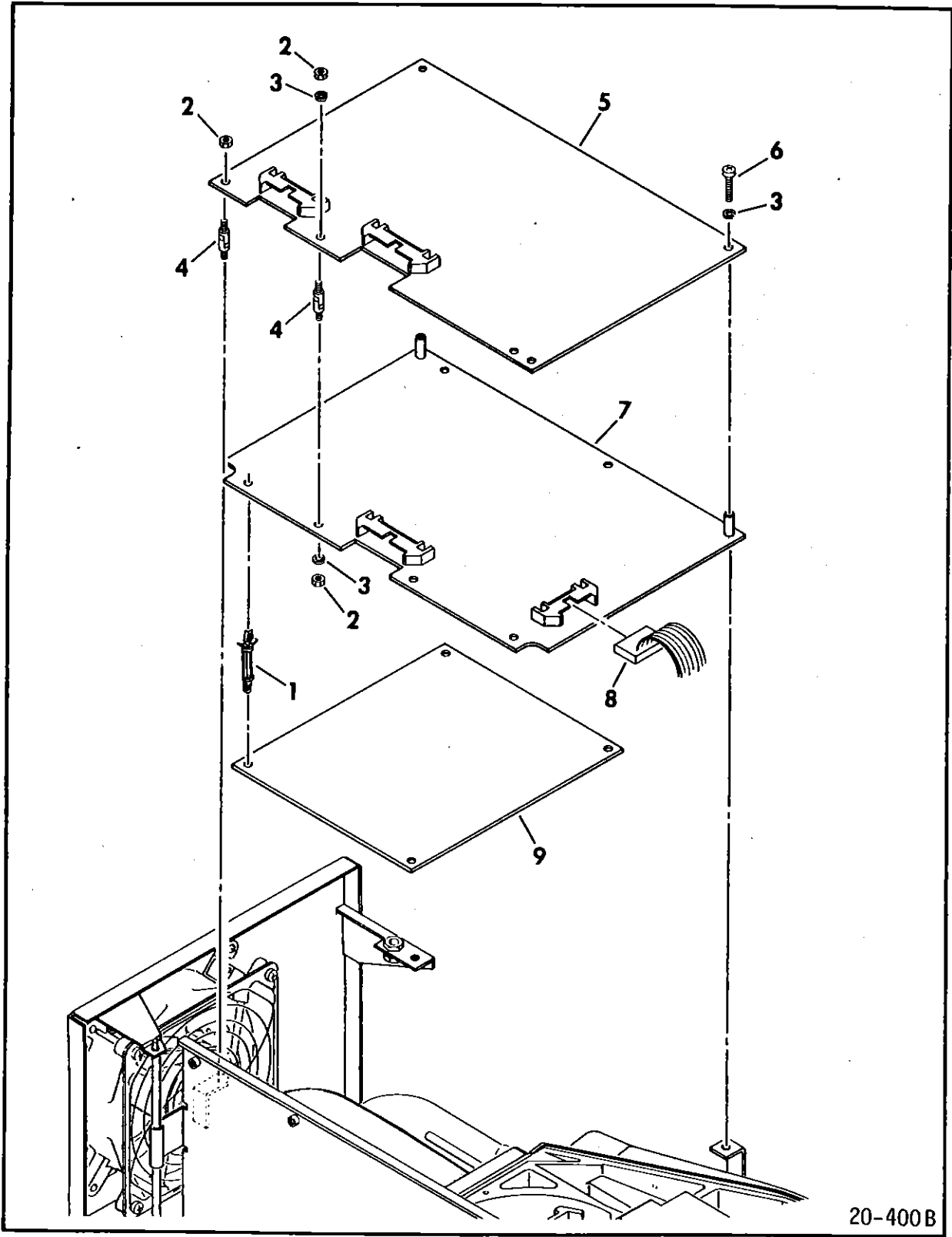
INDEX NO	PART NO	PART DESCRIPTION	NOTE
1	Optional/ Spare	POWER SUPPLY ASSEMBLY	
2	75038380	COVER, Top	
3	Optional	AC POWER CABLE (P01)	
4	Optional	DC POWER CABLE (P40)	
5	Optional	SLIDE ASSEMBLY, LH	
6	Optional	SLIDE ASSEMBLY, RH	
7	Optional	INSULATOR, Slide	
8	Optional	SCREW, PHH, 8-16 x 1/2	
9	Optional	SCREW, PHH, 8-32 x 1/2	
10	10127111	SCREW, PHH, 6-32 x 1/4	



20-301B

Figure 4-3 (Newer Units)

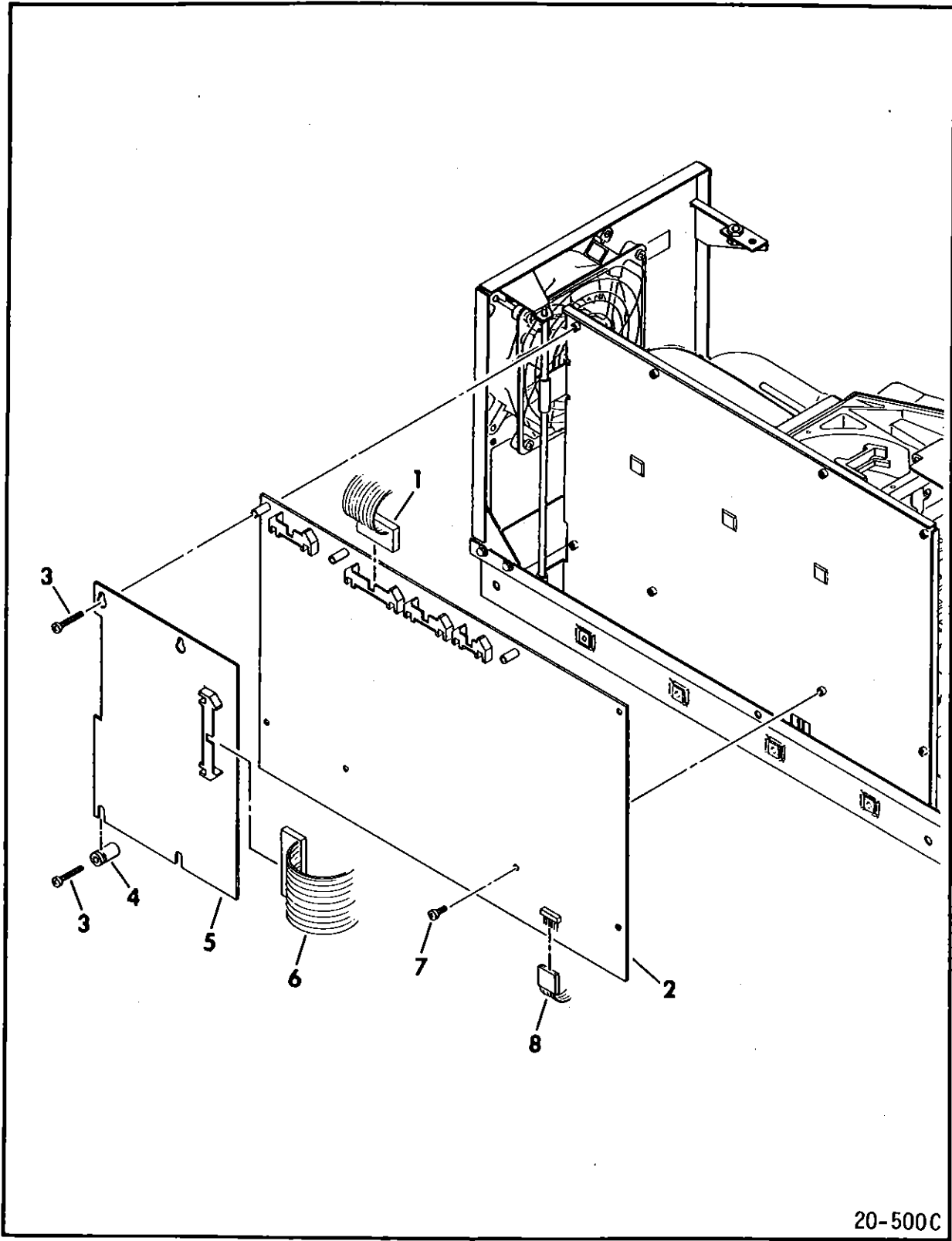
INDEX NO	PART NO	PART DESCRIPTION	NOTE
1	Optional/ Spare	POWER SUPPLY ASSEMBLY	
2	75038380	COVER, Top	
3	Optional	AC POWER CABLE (P01)	
4	Optional	DC POWER CABLE (P40)	
5	Optional	SLIDE ASSEMBLY, LH	
6	Optional	SLIDE ASSEMBLY, RH	
7	Optional	INSULATOR, Slide	
8	Optional	SCREW, PHH, 8-16 x 1/2	
9	Optional	SCREW, PHH, 8-32 x 1/4	
10	10127111	SCREW, PHH, 6-32 x 1/4	
11	Optional	MOUNT, LH	
12	Optional	MOUNT, RH	
13	Optional	SCREW, PHH, 8-32 x 5/16	
14	Optional	LOCKWASHER, #8	
15	Optional	WASHER, #8	
16	Optional	SCREW, PHH, 6-32 x 3/8	
17	Optional	BRACKET, Mounting	



20-400B

Figure 4-4

INDEX NO	PART NO	PART DESCRIPTION	NOTE
1	94378801	SUPPORT, Circuit Board	
2	10125105	NUT, Hex, 6-32	
3	10125803	LOCKWASHER, #6	
4	47402261	STANDOFF, Hinged	
5	Spare	_PGX (READ/WRITE PLO's) BOARD	
6	10127117	SCREW, PHH, 6-32 x 7/8	
7	Spare	_PFX (DATA LATCH) BOARD	
8	92049800	READ/WRITE PREAMP CABLE ASSY	
9	Spare	_PDX (POWER AMP) BOARD	



20-500C

Figure 4-5

INDEX NO	PART NO	PART DESCRIPTION	NOTE
1	93458300	CABLE ASSEMBLY (P29/P30/P31)	
2	54332101	BPEX (CONTROL) BOARD	
3	10127117	SCREW, PHH, 6-32 x 7/8	
4	92555237	STANDOFF	
5	Spare	_EBN (I/O) BOARD	PA3A1 Units Only
5	Spare	_EDN (I/O) BOARD	PA3A2 Units Only
6	Spare	CABLE ASSEMBLY (P14/P20)	
7	10127111	SCREW, PHH, 6-32 x 1/4	
8	Spare	CABLE ASSEMBLY (P28/P34)	

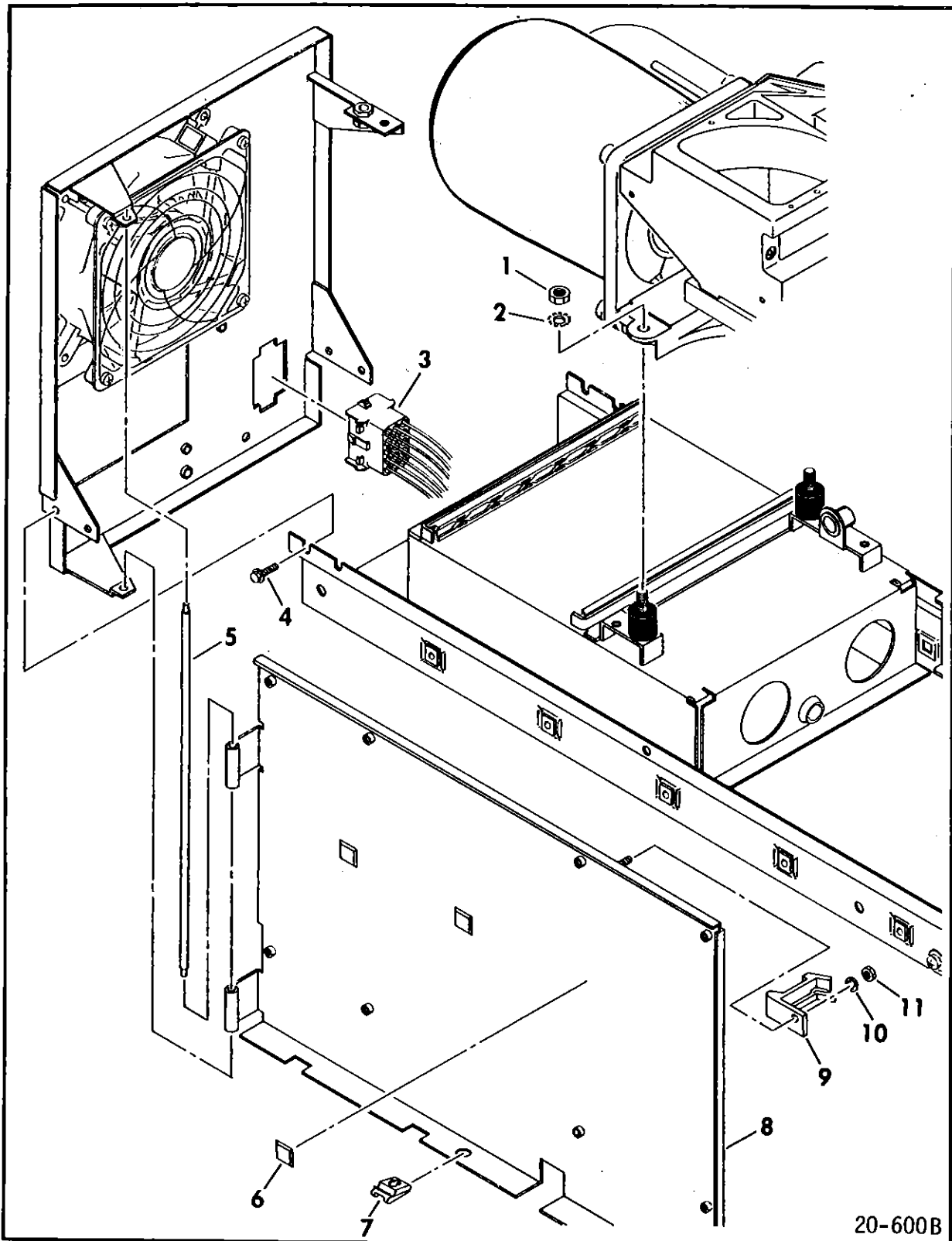


Figure 4-6

INDEX NO	PART NO	PART DESCRIPTION	NOTE
1	10125301	NUT, Hex, 1/4-20	
2	10126404	LOCKWASHER, 1/4	
3	Spare	DC HARNESS (P19/P21/P22/P35/ P36/P37/P38/J40)	
4	93592158	SCREW, Washer Hd, 6-32 x 1/4	
5	93913858	HINGE, Pin	
6	51805802	BUMPER	
7	94317800	RETAINER	
8	92555266	PANEL, Support	
9	93913863	LATCH, Card	
10	10126103	LOCKWASHER, #6	
11	10125105	NUT, Hex, 6-32	

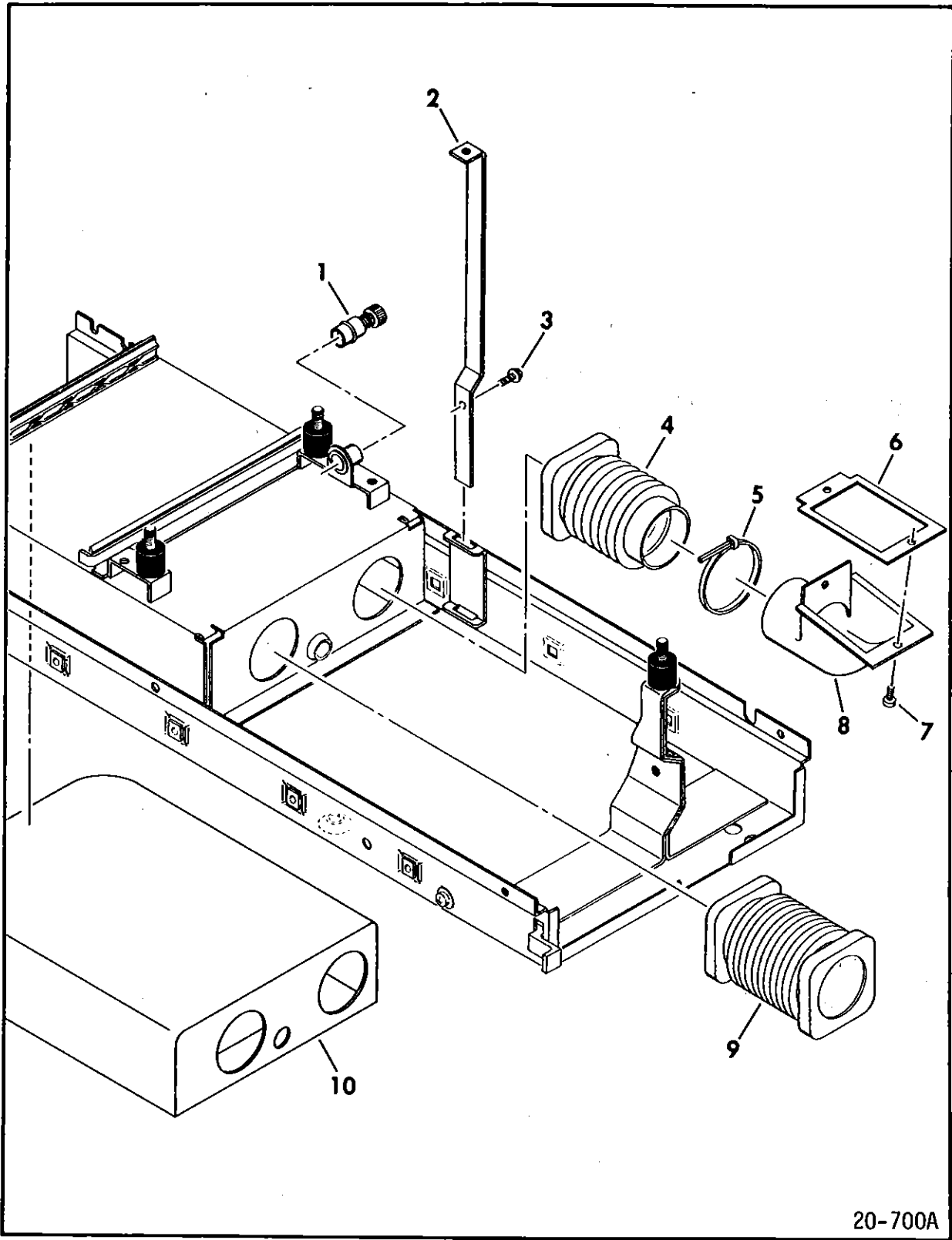


Figure 4-7

INDEX NO	PART NO	PART DESCRIPTION	NOTE
1	81400910	SCREW, Retractable	
2	93263408	SUPPORT, Logic Board	
3	93592158	SCREW, Washer Hd, 6-32 x 1/4	
4	92555201	DUCT, Air	
5	94277415	TY-WRAP	
6	93913854	GASKET	
7	10127111	SCREW, PHH, 6-32 x 1/4	
8	93913857	DUCT, Air	
9	71869100	DUCT, Air	
10	Spare	FILTER, Absolute	

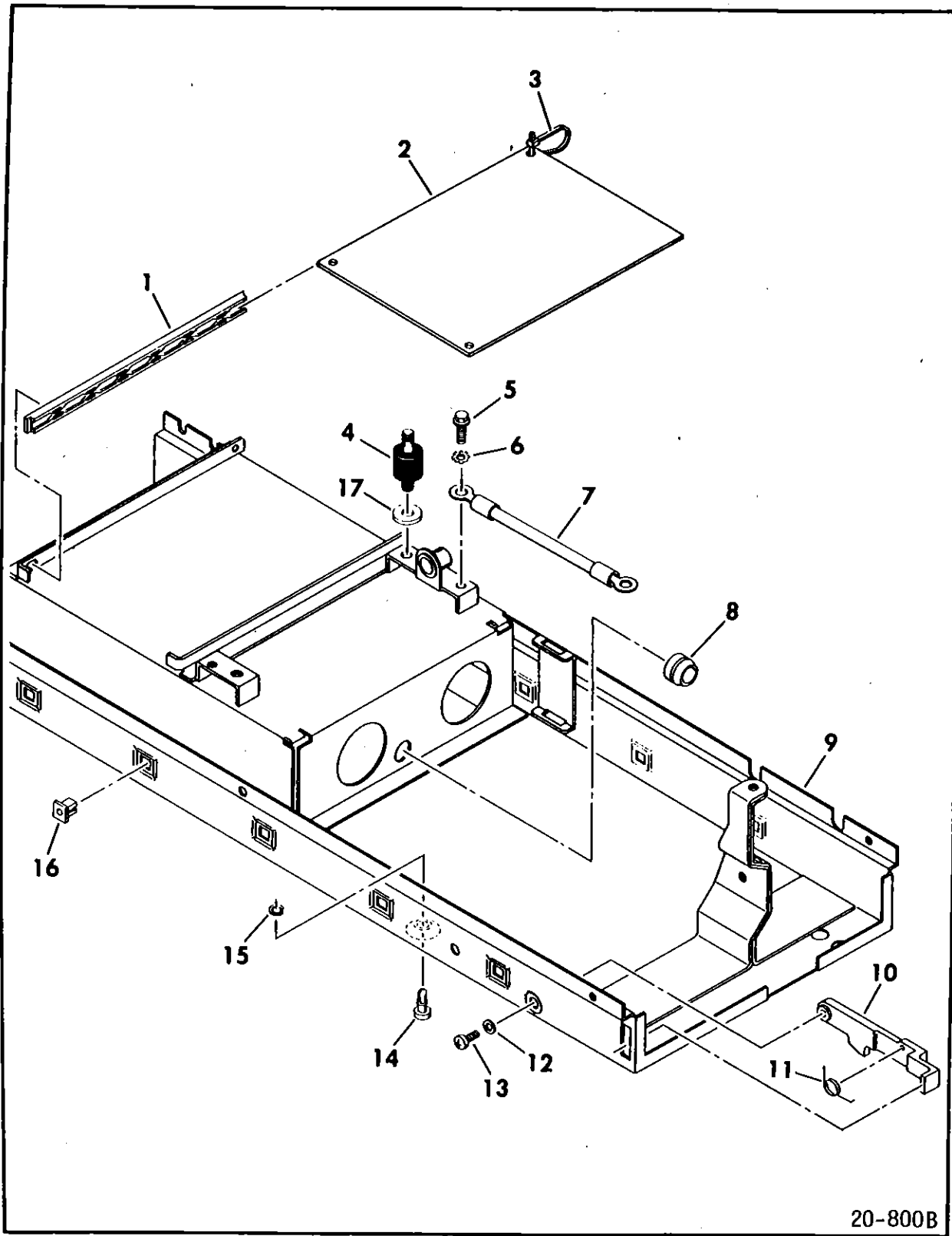


Figure 4-8

INDEX NO	PART NO	PART DESCRIPTION	NOTE
1	72856240	SLIDE	
2	Spare	_PMX (MOT SPD CONTROL) BOARD	
3	94277422	TY-WRAP	
4	93568013	MOUNT, Vibration	
5	93593238	SCREW, Washer Hd, 10-24 x 3/8	
6	10126403	LOCKWASHER, #10	
7	94281427	GROUND CABLE	
8	93913860	GROMMET	
9	93913876	BASE	
10	93913893	LATCH	
11	93263415	SPRING	
12	10125606	WASHER, #8	
13	93749200	SCREW, PHH, 8-32 x 3/8	
14	94317720	FASTENER	
15	94317900	RETAINER	
16	72854290	NUT, Square	
17	92777150	WASHER, Special, 1/4	

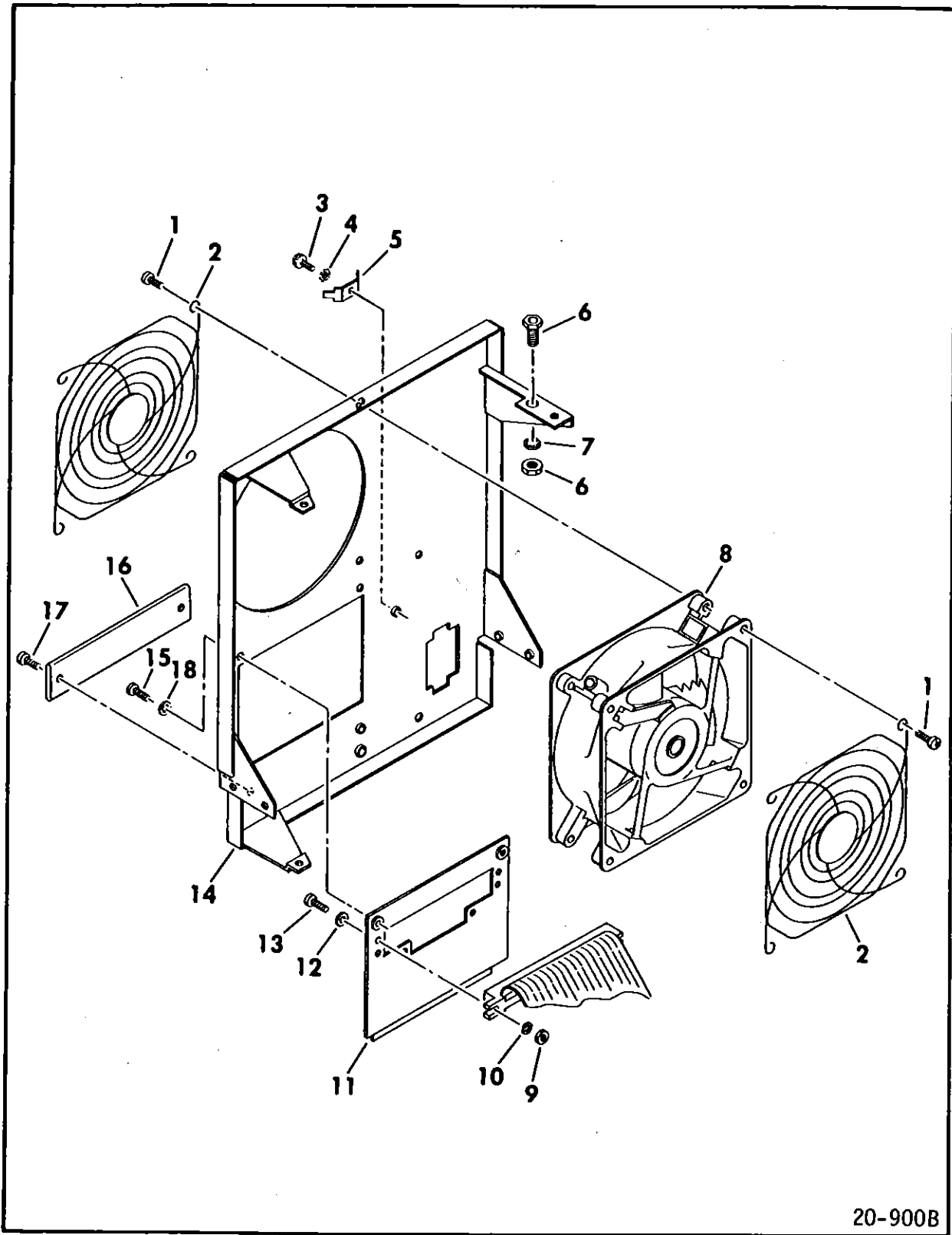


Figure 4-9

INDEX NO	PART NO	PART DESCRIPTION	NOTE
1	17901518	SCREW, PHH, 8-32 x 5/8	
2	94375408	FINGER GUARD, Fan	
3	93592158	SCREW, Washer Hd, 6-32 x 1/4	
4	10126401	LOCKWASHER, #6	
5	94274113	TERMINAL	
6	93879001	JACK, Banana	
7	10126106	LOCKWASHER, 1/4	
8	Spare	FAN ASSEMBLY	
9	10125103	NUT, Hex, 4-40	
10	10125801	LOCKWASHER, #4	
11	72856520	PLATE, I/O	PA3A1 Units Only
11	72856521	PLATE, I/O	PA3A2 Units Only
12	10125603	WASHER, #4	
13	10127105	SCREW, PHH, 4-40 x 1/2	
14	93913859	PANEL, Rear	
15	10127111	SCREW, PHH, 6-32 x 1/4	
16	93920481	CLAMP, I/O Cable	
17	17901511	SCREW, PHH, 6-32 x 5/8	
18	10125803	LOCKWASHER, #6	
	92353800	I/O CABLE CLAMP KIT	
	72851240	BRACKET, Cable	
	72851230	CLAMP, Strain Relief	
	72851231	CLAMP, Grounding	
	17901510	SCREW, PHH, 6-32 x 1/2	
	10125605	WASHER, #6	
	10126401	LOCKWASHER, #6	
	10127146	SCREW, PHH, 10-32 x 7/8	
	10126403	LOCKWASHER, #10	
	10125607	WASHER, #10	
	93920480	CLAMP (for flat cables)	

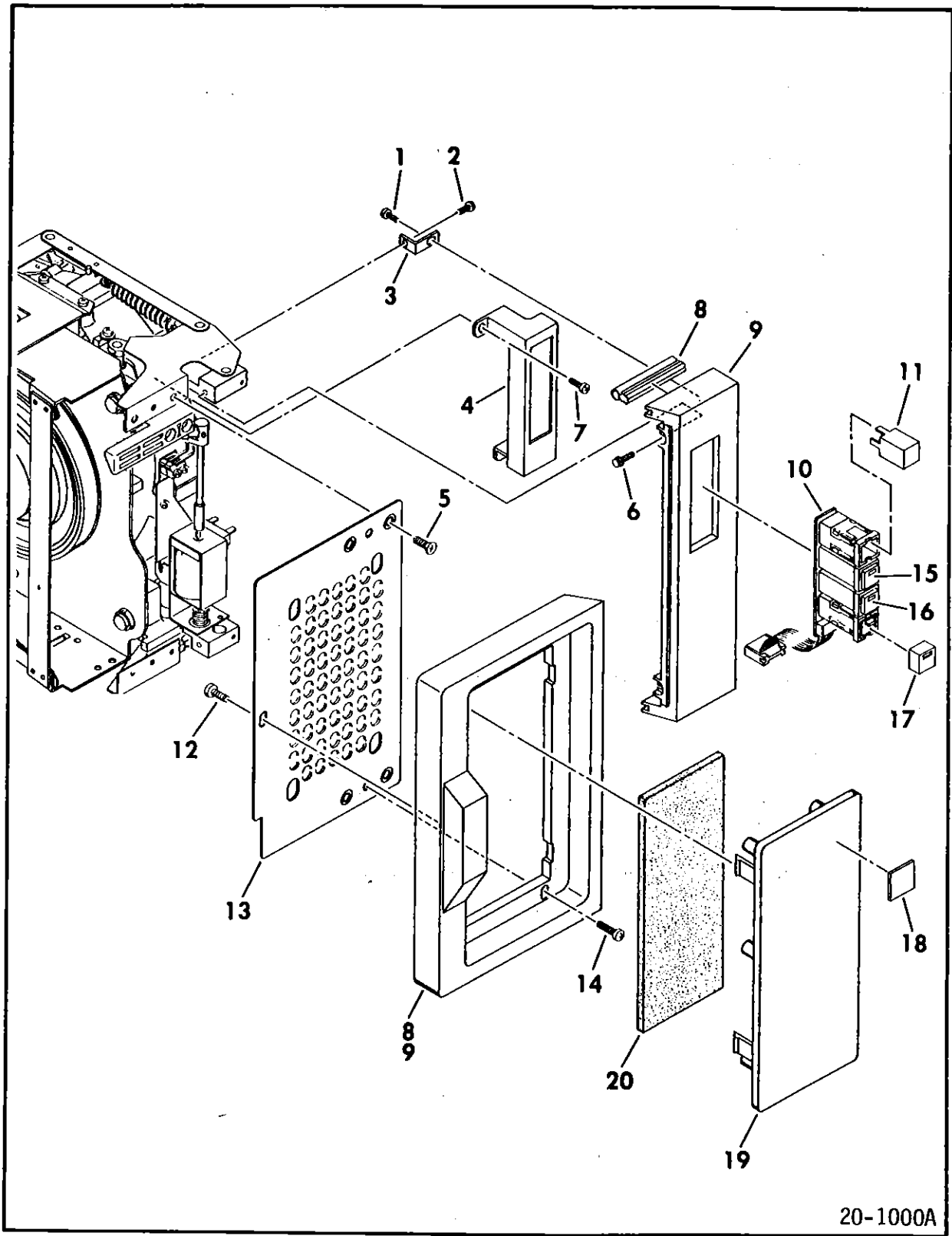


Figure 4-10

INDEX NO	PART NO	PART DESCRIPTION	NOTE
1	Optional	SCREW, PHH, 6-32 x 1/4	
2	Optional	SCREW, Washer Hd, 6-32 x 1/2	
3	Optional	BRACKET, Upper, Control Panel	
4	93913880	BRACKET, Switch	
5	10125734	SCREW, PHH, 10-24 x 5/16	
6	Optional	SCREW, Washer Hd, 6-32 x 3/8	
7	17901509	SCREW, PHH, 6-32 x 3/8	
8	Optional	SEAL	S/C 02 & Abv
9	72860500	FRONT DOOR ASSEMBLY	S/C 01
9	Optional	FRONT DOOR ASSEMBLY	S/C 02 & Abv
10	Spare	_PBX (OPERATOR PANEL) ASSEMBLY	
11	94398817	LOGIC PLUG, "0"	
11	Optional	LOGIC PLUG, "1"	
11	Optional	LOGIC PLUG, "2"	
11	Optional	LOGIC PLUG, "3"	
12	Optional	SCREW, PHH, 10-32 x 3/8	
13	75038341	PLATE, Support	
14	Optional	SCREW, PHH, 10-24 x 3/4	
15	94394255	LENS, "START"	
16	94394256	LENS, "FAULT"	
17	94394257	LENS, "WRITE PROTECT"	
18	Optional	PRODUCT EMBLEM	
19	Optional	PANEL, Insert	
20	Optional	FILTER, Primary	

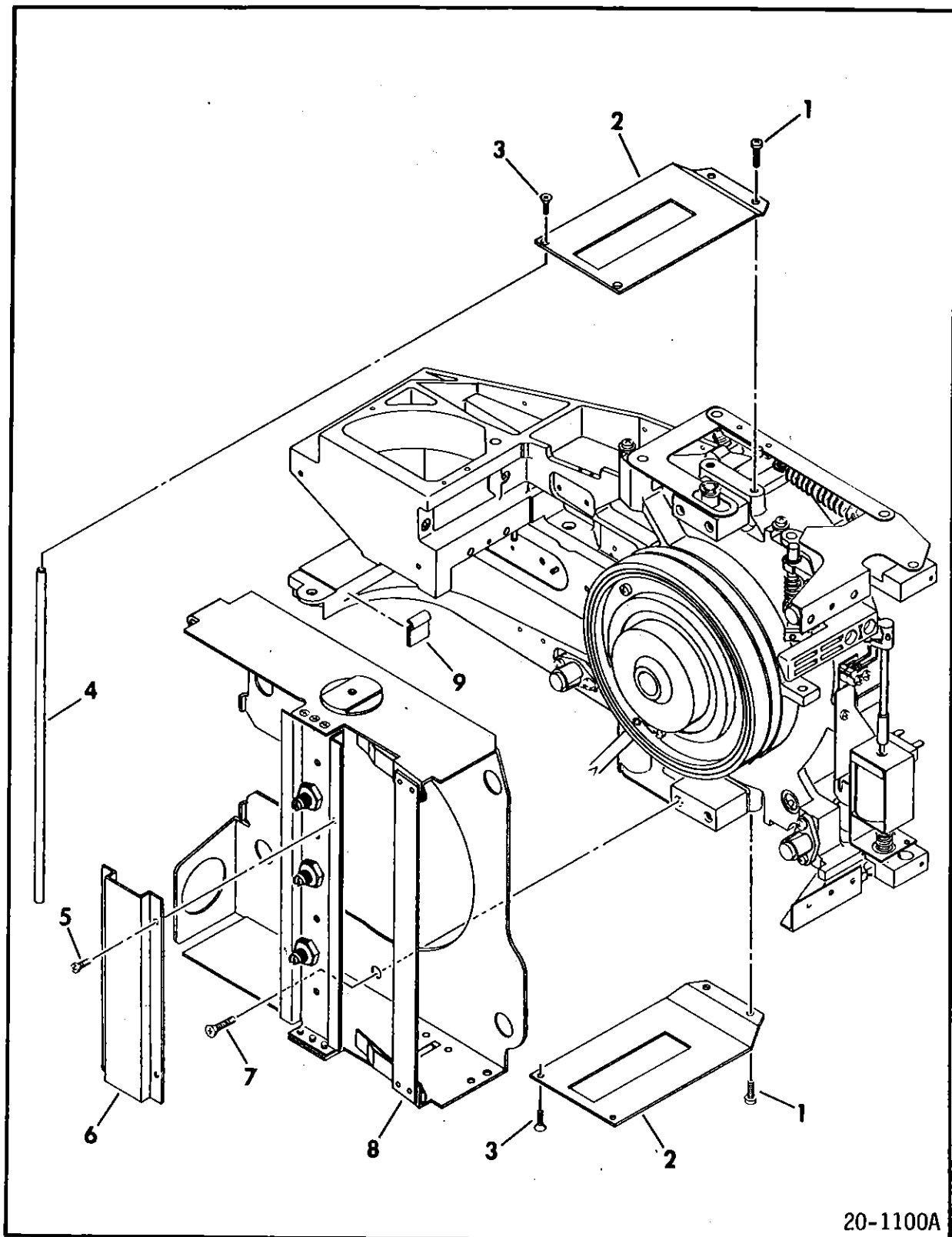
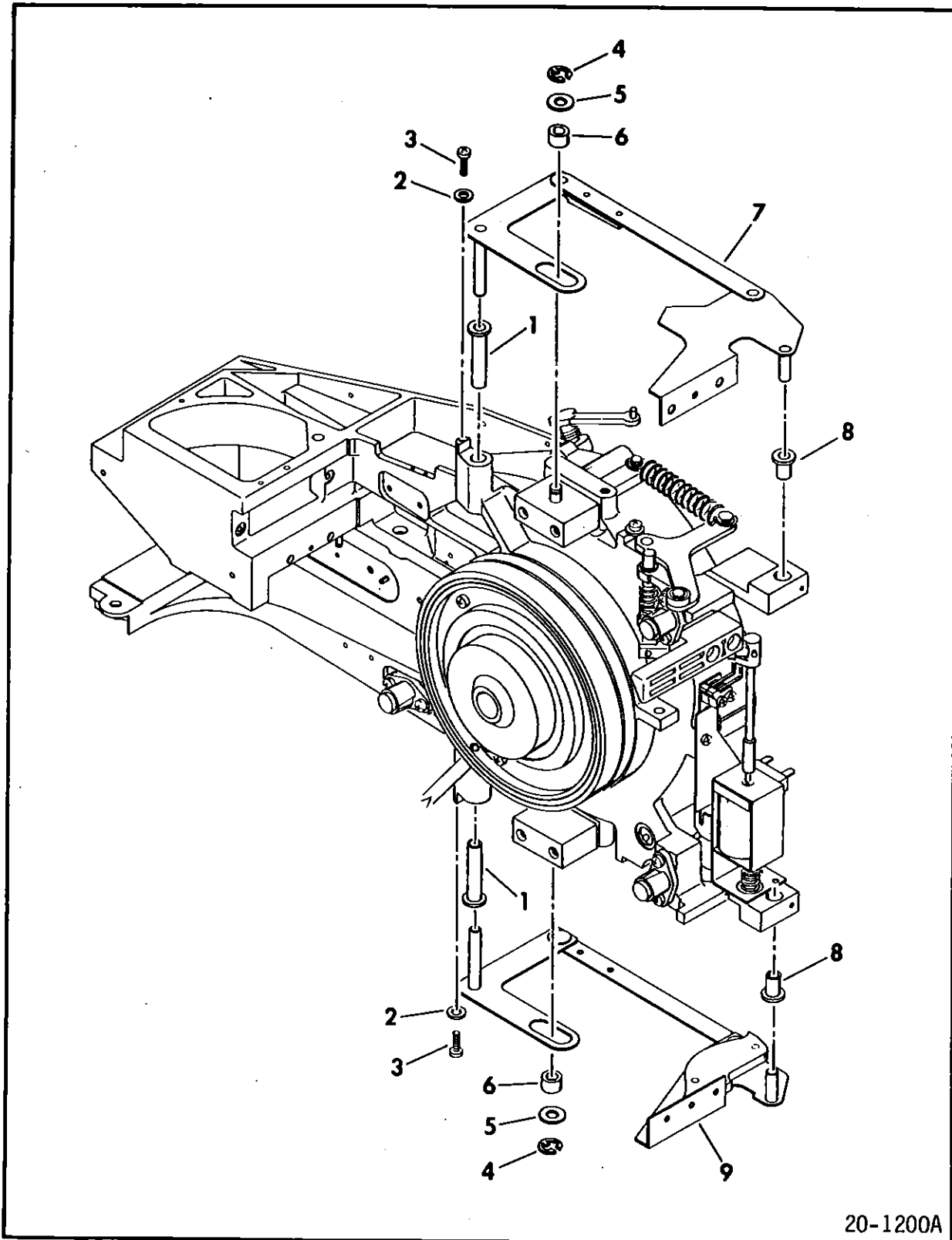


Figure 4-11

INDEX NO	PART NO	PART DESCRIPTION	NOTE
1	93749240	SCREW, PHH, 10-24 x 1/2	
	81305102	SUPPORT BRACKET ASSEMBLY	
2	75038376	SUPPORT, Slide	
3	10125702	SCREW, PHH, 4-40 x 1/4	
4	72864300	ROD, Support, Slide	
5	93660005	SCREW, PHH, 4-40 x 1/4	
6	93913892	BRACKET, Pack Receiver	
7	10125724	SCREW, PHH, 8-32 x 3/8	
8	72860302	PACK RECEIVER	
9	80455500	CLIP	



20-1200A

Figure 4-12

INDEX NO	PART NO	PART DESCRIPTION	NOTE
1	41274010	BEARING, Flanged	
2	93564055	WASHER, Nylon	
3	10127111	SCREW, PHH, 6-32 x 1/4	
4	92033038	RETAINER, Ring	
5	93564054	WASHER, Nylon	
6	93715006	BEARING, Needle	
7	81763701	UPPER LINKAGE ASSEMBLY	
8	41274009	BEARING, Flanged	
9	70919801	LOWER LINKAGE ASSEMBLY	

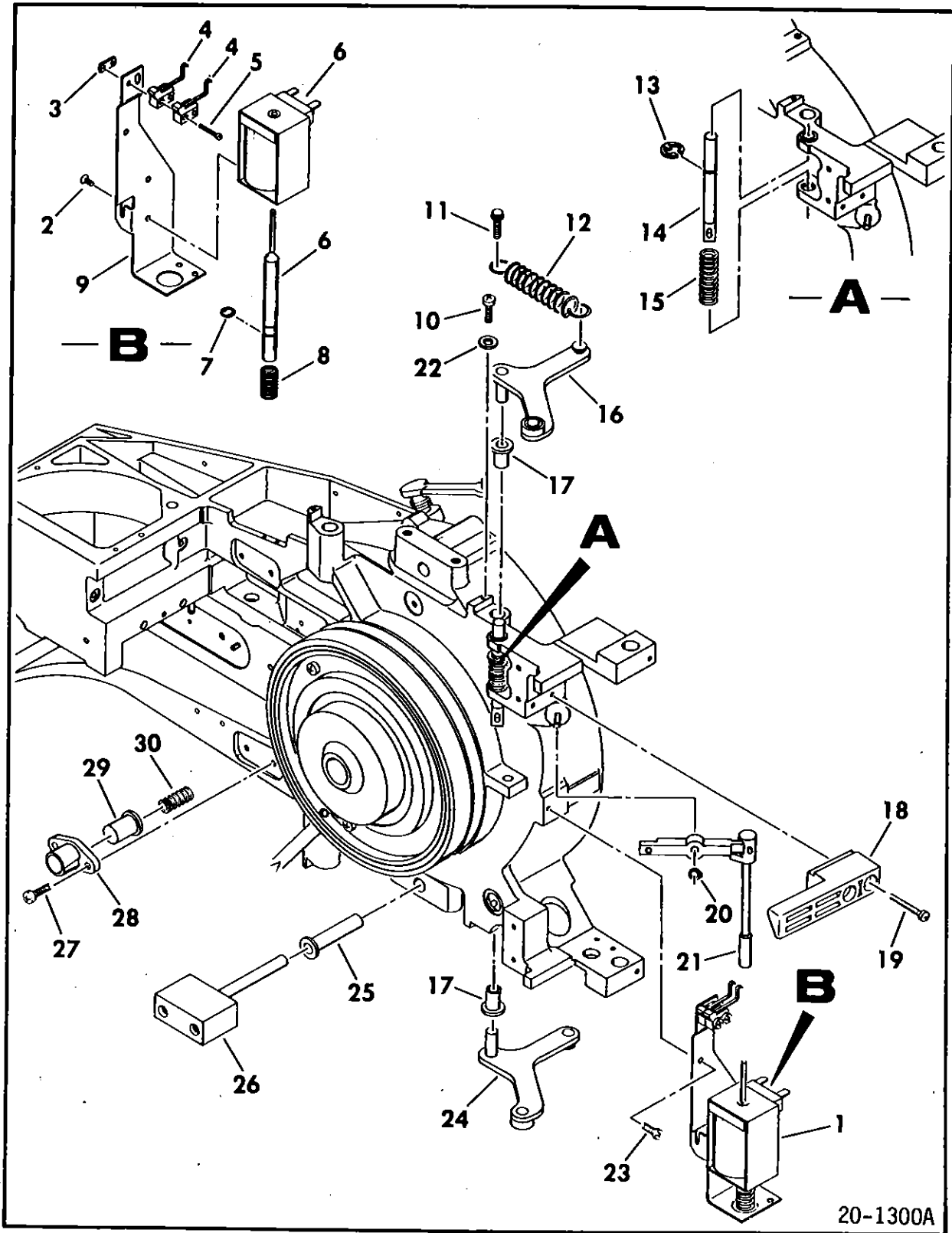
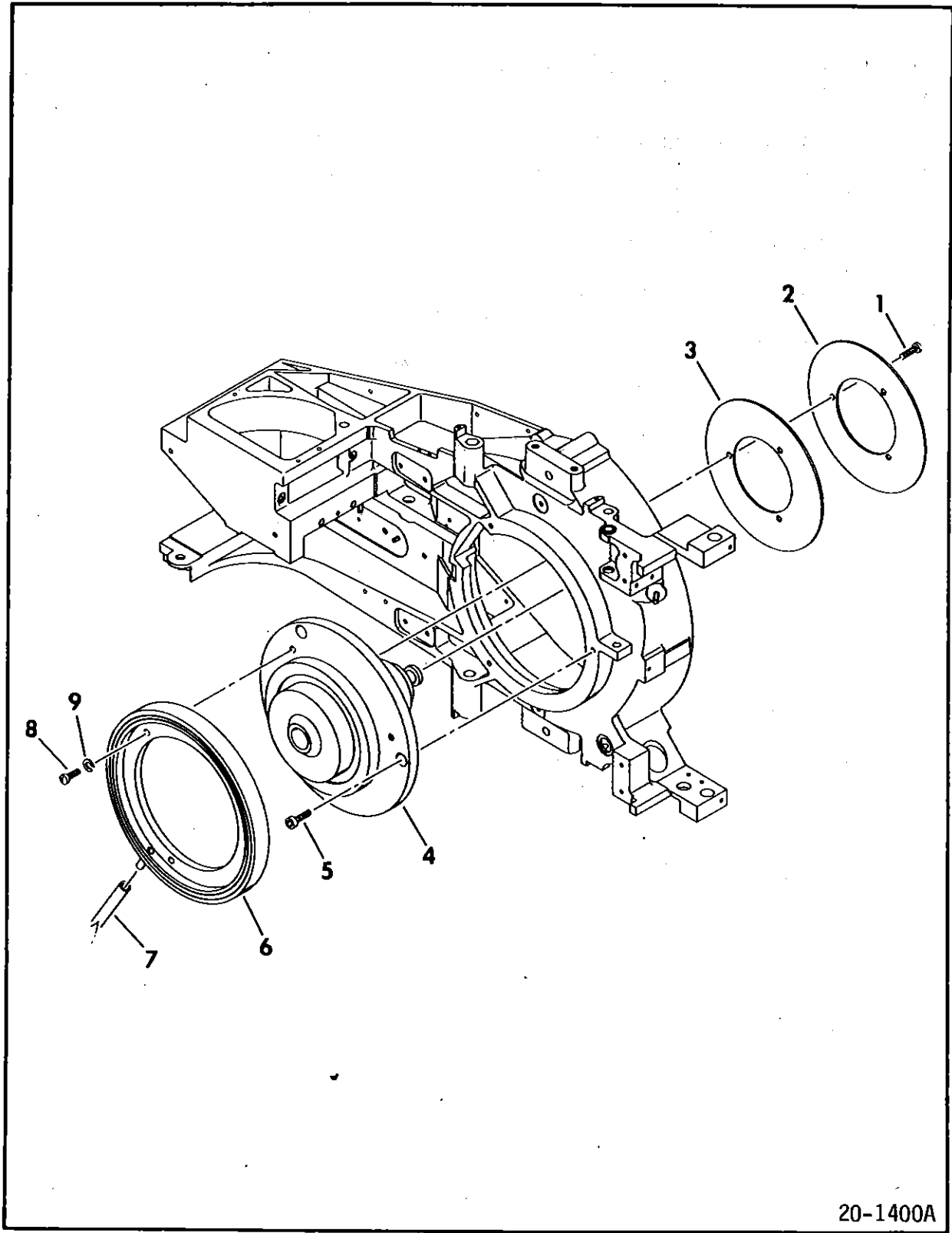


Figure 4-13

INDEX NO	PART NO	PART DESCRIPTION	NOTE
1	72860404	SOLENOID ASSEMBLY	
2	93749156	SCREW, PHH, 6-32 x 3/16	
3	83292404	PLATE, Nut	
4	Spare	SWITCH	
5	10127315	SCREW, PHH, 2-56 x 5/8	
6	Spare	SOLENOID, DC	
7	92033038	RETAINER, Ring	
8	83292703	SPRING, Compression	
9	93913889	BRACKET, Solenoid	
10	10127111	SCREW, PHH, 6-32 x 1/4	
11	93592160	SCREW, Washer Hd, 6-32 x 5/16	
12	94203786	SPRING, Extension	
13	92033038	RETAINER, Ring	
14	93263417	ROD, Lock, Door	
15	83292703	SPRING, Compression	
16	81417080	CAM, Upper, Door	
17	41274009	BEARING, Flanged	
18	75038300	LOCATOR, Pack	
19	93749172	SCREW, PHH, 6-32 x 1	
20	92033102	RETAINER, Ring	
21	80496501	PIVOT ARM ASSEMBLY	
22	93564055	WASHER, Nylon	
23	93749162	SCREW, PHH, 6-32 x 3/8	
24	81417081	CAM, Lower, Door	
25	41274010	BEARING, Flanged	
26	72867900	BLOCK, Guide	
27	10127114	SCREW, PHH, 6-32 x 1/2	
28	93263423	HOUSING, Pin	
29	93263422	PIN	
30	94205641	SPRING, Compression	



20-1400A

Figure 4-14

INDEX NO	PART NO	PART DESCRIPTION	NOTE
1	10127113	SCREW, PHH, 6-32 x 3/8	
2	72868000	SHIELD, Shiny	
3	72868001	SHIELD, Dull	
4	Spare	SPINDLE ASSEMBLY	
5	10126234	SCREW, Socket Hd, 10-24 x 1/2	
6	93417400	PACK RECEIVER SUPPORT RING	
7	94165002	TUBING, Air	
8	10127123	SCREW, PHH, 8-32 x 1/2	
9	10125804	LOCKWASHER, #8	

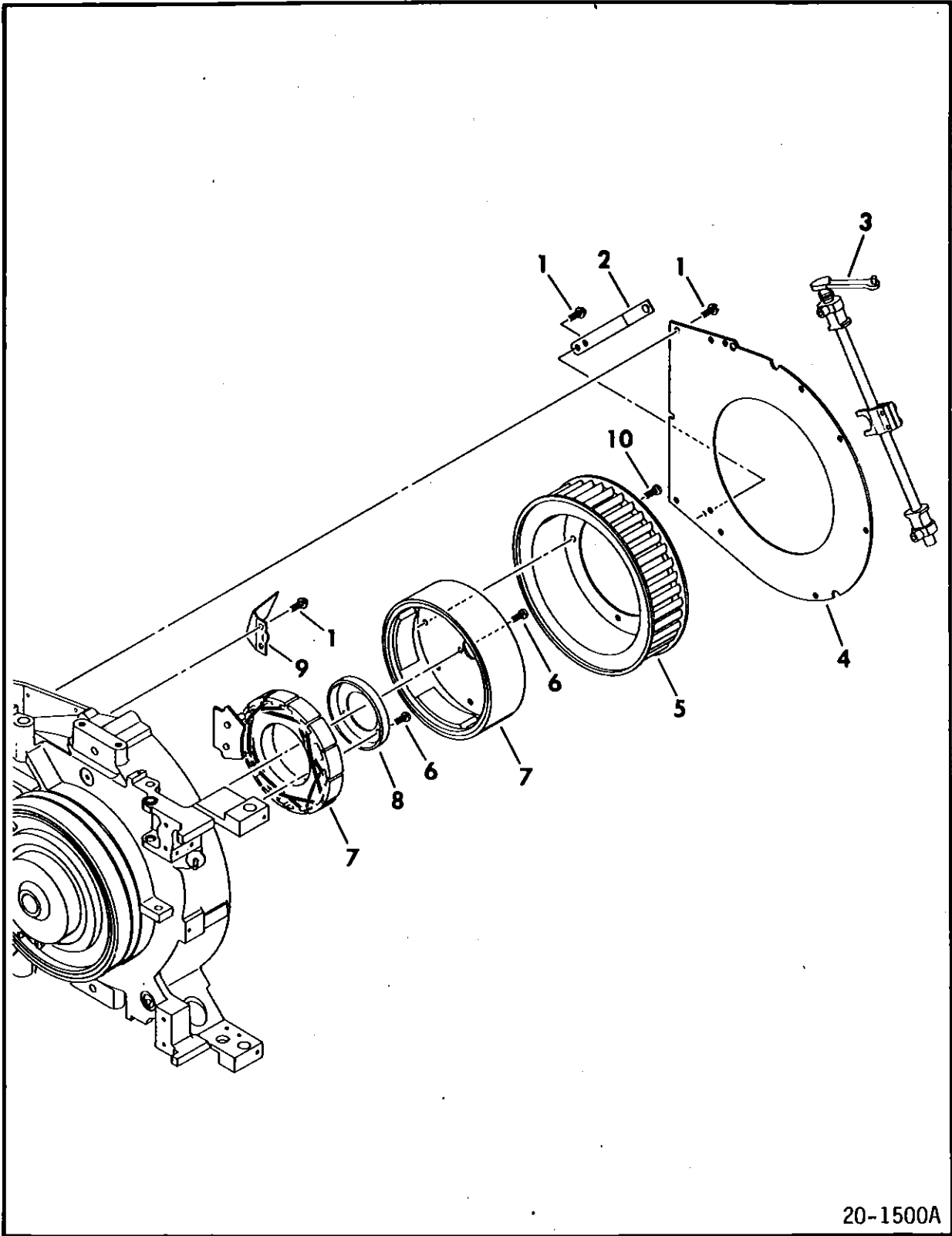


Figure 4-15

INDEX NO	PART NO	PART DESCRIPTION	NOTE
1	93592160	SCREW, Washer Hd, 6-32 x 5/16	
2	Spare	GROUND SPRING, Spindle	
3	76434100	TRIP ROD ASSEMBLY	
4	75038308	COVER, Volute	
5	75038309	IMPELLER	
6	93660043	SCREW, PHH, 6-32 x 3/8	
7	Spare	MOTOR AND CABLE ASSEMBLY	
8	72850900	CLAMP, Motor	
9	93913871	CLAMP, Cable	
10	93660039	SCREW, PHH, 6-32 x 1/4	

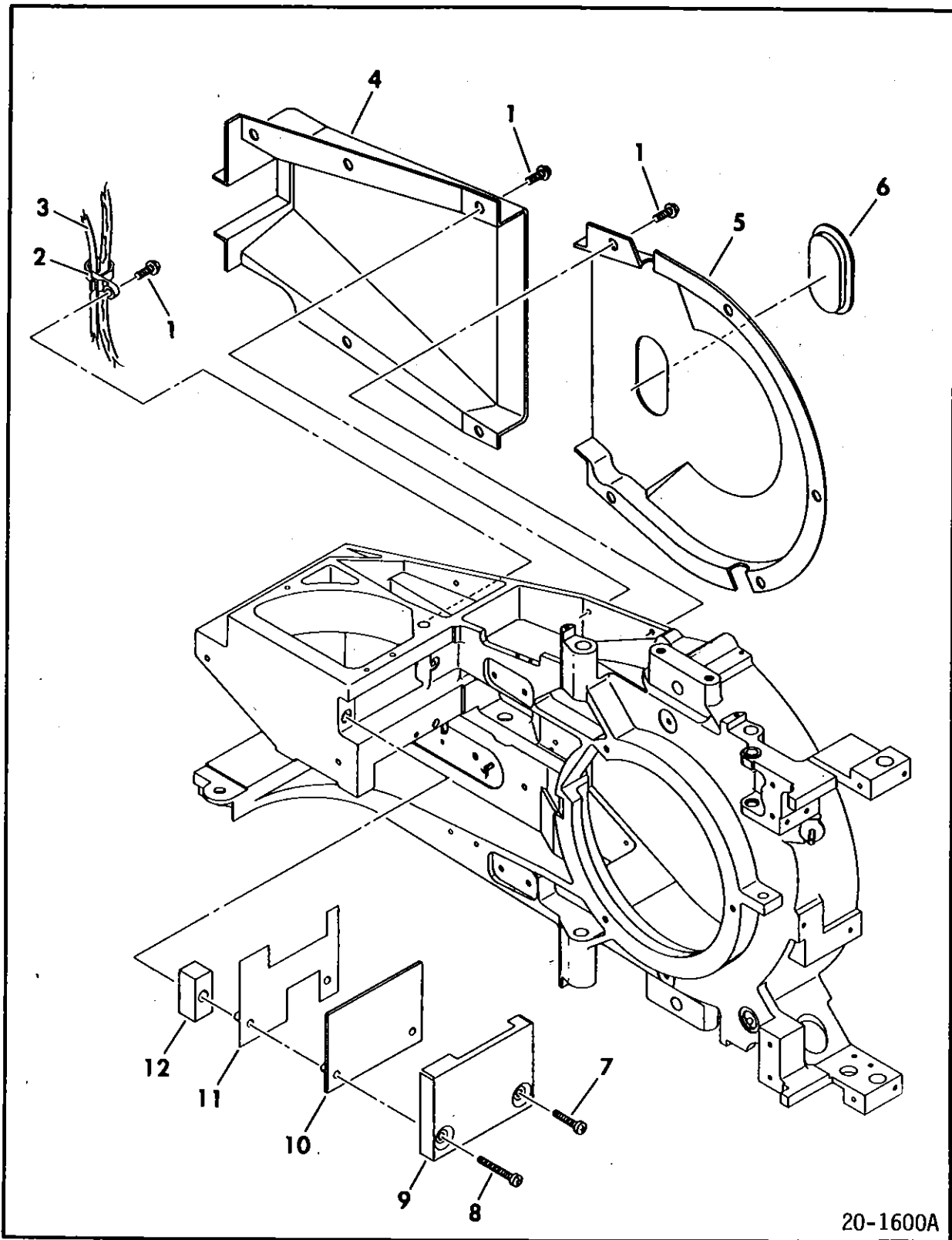
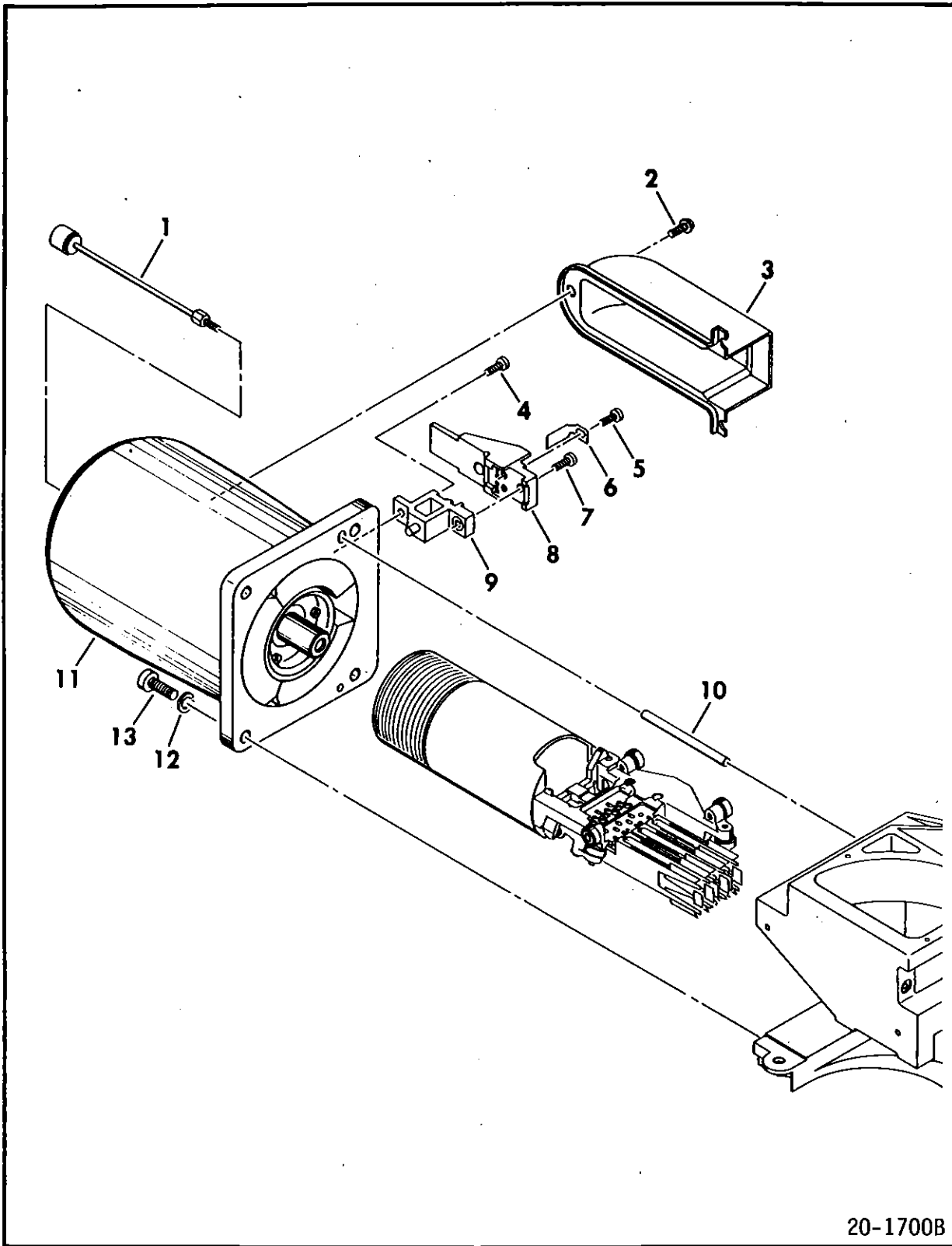


Figure 4-16

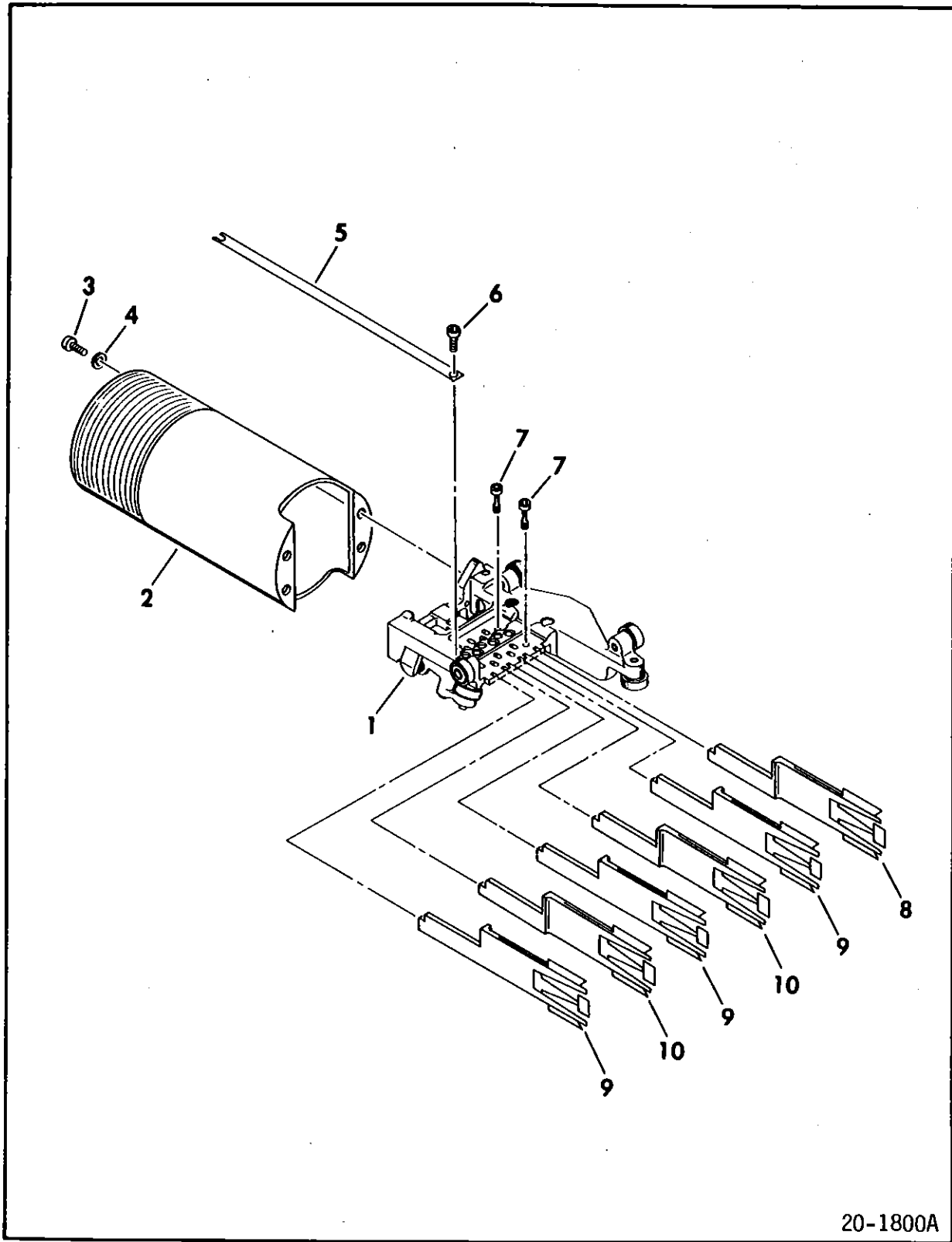
INDEX NO	PART NO	PART DESCRIPTION	NOTE
1	93592160	SCREW, Washer Hd, 6-32 x 5/16	
2	94277406	TY-WRAP	
3	94497000	VOICE COIL CABLE ASSEMBLY	
4	93263400	AIR COVER, Center	
5	93243425	AIR COVER, End	
6	92238700	PLUG, Button	
7	10127116	SCREW, PHH, 6-32 x 3/4	
8	10127118	SCREW, PHH, 6-32 x 1	
9	92555297	COVER, R/W Preamp Board	
10	Spare	_PCX (R/W PREAMP) BOARD	
11	92555298	SHIELD, R/W Preamp Board	
12	75151505	SEAL	



20-1700B

Figure 4-17

INDEX NO	PART NO	PART DESCRIPTION	NOTE
1	80559800	ROD ASSEMBLY	
2	93592160	SCREW, Washer Hd, 6-32 x 5/16	
3	75151504	AIR COVER, Magnet	
4	10127113	SCREW, PHH, 6-32 x 3/8	
5	10127111	SCREW, PHH, 6-32 x 1/4	
6	75151503	TERMINAL	
7	10127114	SCREW, PHH, 6-32 x 1/2	
8	72865100	CLAMP	
9	72865000	BLOCK, Mounting	
10	92021028	PIN, Dowel	
11	72861000	MAGNET ASSEMBLY	
12	10125806	LOCKWASHER, 1/4	
13	10126256	SCREW, Socket Hd, 1/4-20 x 3/4	



20-1800A

Figure 4-18

INDEX NO	PART NO	PART DESCRIPTION	NOTE
1	Spare	CARRIAGE ASSEMBLY	
2	Spare	COIL AND LEAD ASSEMBLY	
3	10126213	SCREW, Socket Hd, 4-40 x 3/8	
4	10125603	WASHER, #4	
5	93263480	GROUND LEAD	
6	93592082	SCREW, Washer Hd, 4-40 x 1/4	
7	Spare	SCREW, Head Arm	
8	Spare	HEAD ARM ASSEMBLY, Servo	
9	Spare	HEAD ARM ASSEMBLY, Data Top	Heads 0,2,4
10	Spare	HEAD ARM ASSEMBLY, Data Bottom	Heads 1,3

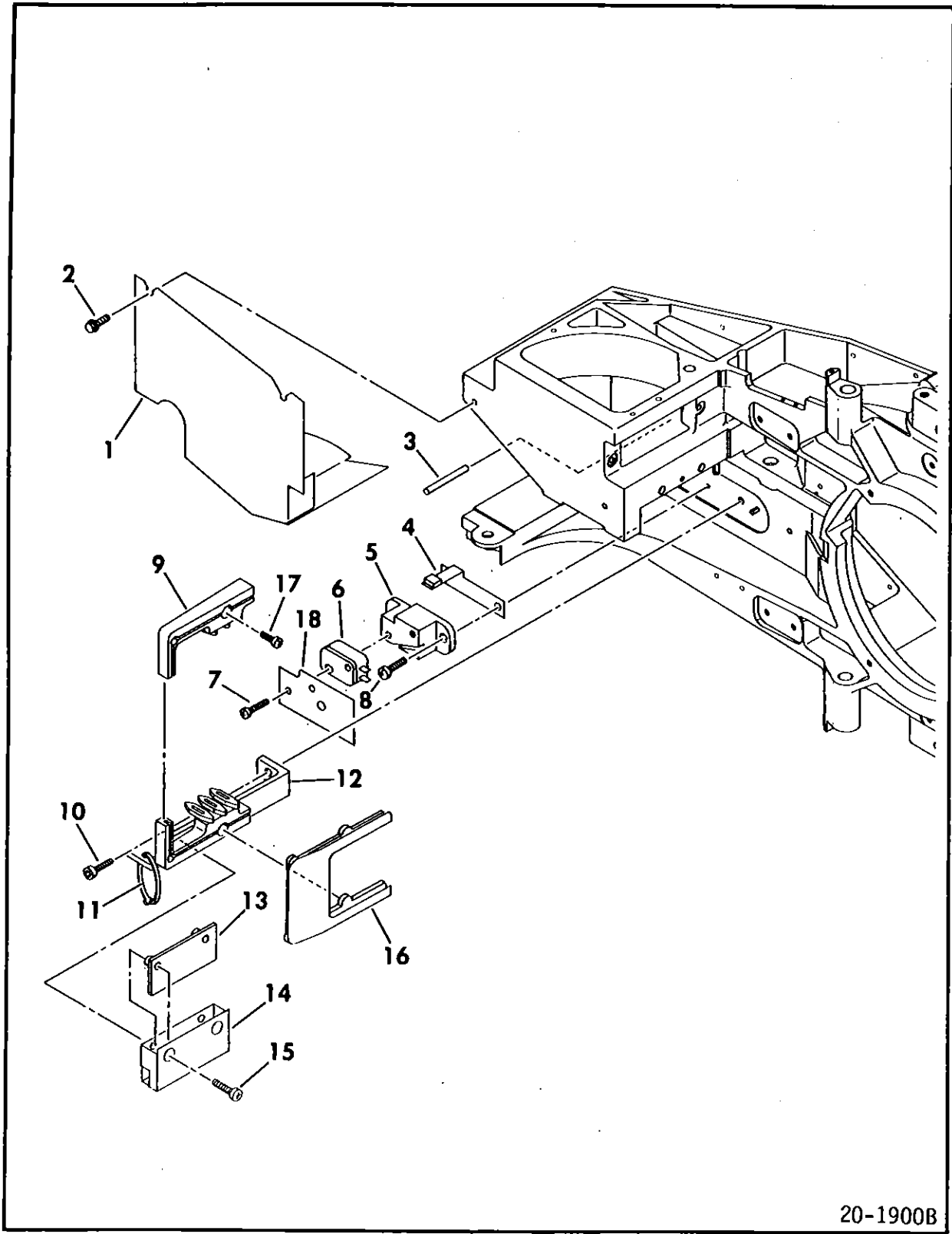
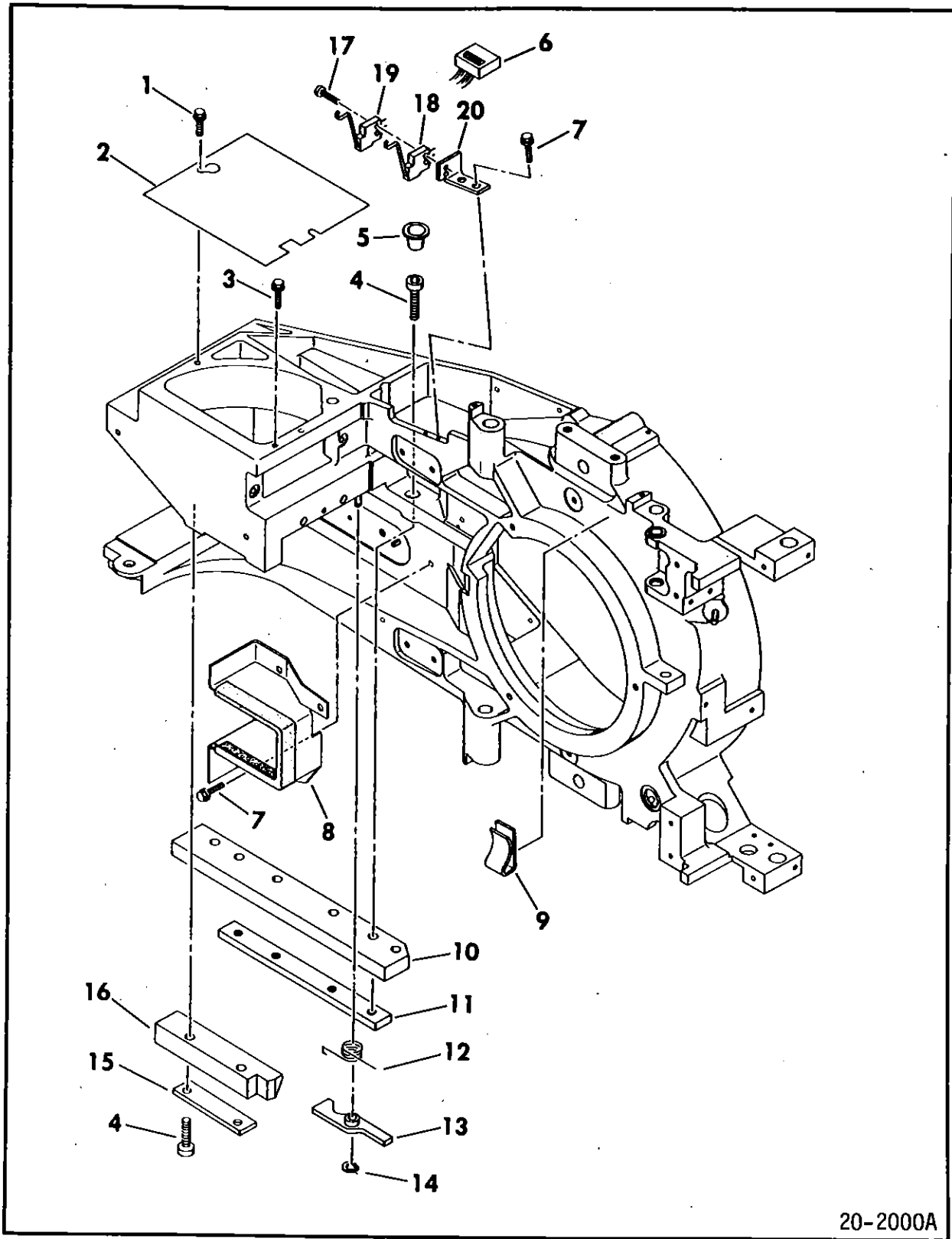


Figure 4-19

INDEX NO	PART NO	PART DESCRIPTION	NOTE
1	93263419	AIR COVER, Side	
2	93592158	SCREW, Washer Hd, 6-32 x 1/4	
3	93913890	PIN, Carriage Stop	
4	75038379	ARM, Switch	
5	93913864	BLOCK, Switch	
6	93786028	HEADS LOADED SWITCH	
7	10127105	SCREW, PHH, 4-40 x 1/2	
8	10127111	SCREW, PHH, 6-32 x 1/4	
9	83292371	CAM TOWER, Upper	
10	10126234	SCREW, Socket Hd, 10-24 x 1/2	
11	94277400	TY-WRAP	
12	92867400	CAM TOWER, Lower	
13	Spare	_UUN (SERVO PREAMP) BOARD	
14	72868900	COVER, Servo Preamp Board	
15	10127114	SCREW, PHH, 6-32 x 1/2	
16	92555219	GASKET, Rubber	
17	10127113	SCREW, PHH, 6-32 x 3/8	
18	75038345	SHIELD, Switch	



20-2000A

Figure 4-20

INDEX NO	PART NO	PART DESCRIPTION	NOTE
1	93592158	SCREW, Washer Hd, 6-32 x 1/4	
2	93263416	AIR COVER, Top	
3	93592082	SCREW, Washer Hd, 4-40 x 1/4	
4	10126237	SCREW, Socket Hd, 10-24 x 7/8	
5	94353217	PLUG	
6	81853300	INTERLOCK CABLE ASSEMBLY	
7	93592160	SCREW, Washer Hd, 6-32 x 5/16	
8	47010401	AIR BAFFLE AND SEAL ASSEMBLY	
9	94241019	CLIP, Cable	
10	Spare	RAIL, Lower	
11	93263424	PLATE, Rail, Lower	
12	93263401	SPRING, Torsion	
13	93263402	ARM, Carriage Lock	
14	92033004	RETAINER, Ring	
15	75038338	PLATE, Rail, Upper	
16	Spare	RAIL, Upper	
	94476600	SWITCH ASSEMBLY	
17	10127315	Screw, PHH, 2-56 x 5/8	
18	94364400	Switch, Pack in Place	
19	94364400	Switch, Write Protect	
20	93263405	Bracket	

TABLE 4-1. OPTIONAL PARTS

PART NO.	PART DESCRIPTION	EQUIPMENT PACKAGE 957654xx													
		00	01	03	05	07	08	09	10	11	12	13	14	15	
72860001	PA3A1A DRIVE	XX		XX	XX	XX	XX	XX	XX	XX	XX	XX	XX	XX	
72860002	PA3A2A DRIVE		XX												
72896502	POWER SUPPLY	XX	XX	XX	XX	XX	XX	XX	XX	XX	XX	XX	XX	XX	
75168315	AC CABLE P01	XX	XX	XX	XX	XX	XX	XX	XX	XX	XX	XX	XX	XX	
75168317	AC CABLE P01														
93991802	DC CABLE P40						XX					XX			
93991803	DC CABLE P40	XX	XX	XX					XX	XX			XX	XX	
93991804	DC CABLE P40				XX	XX		XX			XX				
73157936	SLIDE ASSY, LH	XX	XX	XX	XX	XX	XX				XX	XX		XX	
73157937	SLIDE ASSY, RH	XX	XX	XX	XX	XX	XX				XX	XX		XX	
93263420	INSULATOR, S1	XX	XX	XX	XX	XX	XX	XX	XX	XX	XX	XX	XX	XX	
94375825	SCREW, 8-16x1/2	XX	XX	XX	XX	XX	XX	XX	XX	XX	XX	XX	XX	XX	
17901517	SCREW, 8-32x1/2	XX	XX	XX	XX	XX	XX	XX	XX	XX	XX	XX	XX	XX	
92905071	SCREW, 8-32x1/4	XX	XX	XX	XX	XX	XX				XX	XX		XX	
92723680	MOUNT, LH	XX	XX	XX	XX	XX	XX				XX	XX		XX	
92723681	MOUNT, RH	XX	XX	XX	XX	XX	XX				XX	XX		XX	
10127121	SCREW 8-32x5/16	XX	XX	XX	XX	XX	XX				XX	XX		XX	
10126402	LOCKWASHER, #8	XX	XX	XX	XX	XX	XX				XX	XX		XX	
10125606	WASHER, #8	XX	XX	XX	XX	XX	XX				XX	XX		XX	
17901509	SCREW, 6-32x3/8	XX	XX	XX	XX	XX	XX				XX	XX		XX	
93402700	BRACKET, Mtg	XX	XX	XX	XX	XX	XX				XX	XX		XX	
93749164	SCREW, 6-32x1/4	XX	XX	XX	XX	XX	XX	XX	XX	XX	XX	XX	XX	XX	
93593164	SCREW, 6-32x1/2	XX	XX	XX	XX	XX	XX	XX	XX	XX	XX	XX	XX	XX	
93263447	BRACKET, CntPan	XX	XX	XX	XX	XX	XX	XX	XX	XX	XX	XX	XX	XX	
93592162	SCREW, 6-32x3/8	XX	XX	XX	XX	XX	XX	XX	XX	XX	XX	XX	XX	XX	
94377000	SEAL	XX	XX	XX	XX	XX	XX	XX	XX	XX	XX	XX	XX	XX	
95243700	FR DOOR ASSY	XX	XX	XX	XX	XX	XX	XX	XX	XX	XX	XX	XX	XX	
94398818	LOGIC PLUG "1"	XX	XX	XX	XX	XX	XX	XX	XX	XX	XX	XX	XX	XX	
94398819	LOGIC PLUG "2"	XX	XX	XX	XX	XX	XX	XX	XX	XX	XX	XX	XX	XX	
94398820	LOGIC PLUG "3"	XX	XX	XX	XX	XX	XX	XX	XX	XX	XX	XX	XX	XX	
93660111	SCREW 10-32x3/8	XX	XX	XX	XX	XX	XX	XX	XX	XX	XX	XX	XX	XX	
10127134	SCREW 10-24x3/4	XX	XX	XX	XX	XX	XX	XX	XX	XX	XX	XX	XX	XX	
94397021	PRODUCT EMBLEM	XX	XX	XX	XX	XX	XX	XX	XX	XX	XX	XX	XX	XX	
94474300	PANEL, Insert	XX	XX	XX	XX	XX	XX	XX	XX	XX	XX	XX	XX	XX	
72852572	FILTER, Primary	XX	XX	XX	XX	XX	XX	XX	XX	XX	XX	XX	XX	XX	
92353800	I/O CABLE KIT	XX	XX	XX	XX	XX	XX	XX	XX	XX	XX	XX	XX	XX	
93270700	TERMINATOR										XX	XX		XX	
94369595	GROUND CABLE						XX					XX			
81537402	I/O (A) CABLE														
92708902	I/O (B) CABLE														

Table Continued on Next Page

TABLE 4-1. OPTIONAL PARTS (Contd)

PART NO.	PART DESCRIPTION	EQUIPMENT PACKAGE 957654xx												
		16	17	18	19	20	21	22	23	24	25	26	27	28
72860001	PA3A1A DRIVE	XX	XX	XX	XX	XX	XX	XX	XX	XX	XX	XX	XX	XX
72860002	PA3A2A DRIVE													
72896502	POWER SUPPLY	XX	XX	XX	XX	XX	XX	XX	XX	XX	XX	XX		
75168315	AC CABLE P01	XX	XX	XX	XX	XX	XX	XX	XX	XX	XX	XX		
75168317	AC CABLE P01													
93991802	DC CABLE P40						XX	XX	XX	XX	XX	XX	XX	XX
93991803	DC CABLE P40	XX	XX	XX										
93991804	DC CABLE P40				XX	XX								
73157936	SLIDE ASSY, LH	XX							XX	XX			XX	
73157937	SLIDE ASSY, RH	XX							XX	XX			XX	
93263420	INSULATOR, S1	XX	XX	XX	XX	XX	XX	XX	XX	XX	XX	XX	XX	XX
94375825	SCREW, 8-16x1/2	XX	XX	XX	XX	XX	XX	XX	XX	XX	XX	XX	XX	XX
17901517	SCREW, 8-32x1/2	XX	XX	XX	XX	XX	XX	XX	XX	XX	XX	XX	XX	XX
92705071	SCREW, 8-32x1/4	XX							XX	XX				
92723680	MOUNT, LH	XX							XX	XX				
92723681	MOUNT, RH	XX							XX	XX				
10127121	SCREW 8-32x5/16	XX							XX	XX				
10126402	LOCKWASHER, #8	XX							XX	XX				
10125606	WASHER, #8	XX							XX	XX				
17901509	SCREW, 6-32x3/8	XX							XX	XX				
93402700	BRACKET, Mtg	XX							XX	XX				
93749164	SCREW, 6-32x1/4	XX	XX	XX	XX	XX	XX	XX	XX	XX	XX	XX	XX	XX
93593164	SCREW, 6-32x1/2	XX	XX	XX	XX	XX	XX	XX	XX	XX	XX	XX	XX	XX
93263447	BRACKET, CntPan	XX	XX	XX	XX	XX	XX	XX	XX	XX	XX	XX	XX	XX
93592162	SCREW, 6-32x3/8	XX	XX	XX	XX	XX	XX	XX	XX	XX	XX	XX	XX	XX
94377000	SEAL	XX	XX	XX	XX	XX	XX	XX	XX	XX	XX	XX	XX	XX
95243700	FR DOOR ASSY	XX	XX	XX	XX	XX	XX	XX	XX	XX	XX	XX	XX	XX
94398818	LOGIC PLUG "1"	XX	XX	XX	XX	XX	XX	XX	XX	XX	XX	XX	XX	XX
94398819	LOGIC PLUG "2"	XX	XX	XX	XX	XX	XX	XX	XX	XX	XX	XX	XX	XX
94398820	LOGIC PLUG "3"	XX	XX	XX	XX	XX	XX	XX	XX	XX	XX	XX	XX	XX
93660111	SCREW 10-32x3/8	XX	XX	XX	XX	XX	XX	XX	XX	XX	XX	XX	XX	XX
10127134	SCREW 10-24x3/4	XX	XX	XX	XX	XX	XX	XX	XX	XX	XX	XX	XX	XX
94397021	PRODUCT EMBLEM	XX	XX	XX	XX	XX	XX	XX	XX	XX	XX	XX	XX	XX
94474300	PANEL, Insert	XX	XX	XX	XX	XX	XX	XX	XX	XX	XX	XX	XX	XX
72852572	FILTER, Primary	XX	XX	XX	XX	XX	XX	XX	XX	XX	XX	XX	XX	XX
92353800	I/O CABLE KIT	XX	XX	XX	XX	XX	XX	XX	XX	XX	XX	XX	XX	XX
93270700	TERMINATOR	XX	XX		XX	XX			XX	XX	XX	XX	XX	XX
94369595	GROUND CABLE						XX	XX	XX	XX	XX	XX	XX	XX
81537402	I/O (A) CABLE													
92708902	I/O (B) CABLE													

Table Continued on Next Page

TABLE 4-1. OPTIONAL PARTS (Contd)

PART NO.	PART DESCRIPTION	EQUIPMENT PACKAGE 957654xx													
		29	30	31	32	33	34	35	36	37	38	39	40	41	
72860001	PA3A1A DRIVE	XX		XX	XX	XX	XX	XX	XX	XX	XX	XX	XX	XX	
72860002	PA3A2A DRIVE		XX												
72896502	POWER SUPPLY														
75168315	AC CABLE P01														
75168317	AC CABLE P01														
93991802	DC CABLE P40	XX	XX												
93991803	DC CABLE P40			XX	XX	XX									
93991804	DC CABLE P40						XX	XX	XX	XX					
73157936	SLIDE ASSY, LH	XX		XX	XX		XX		XX			XX		XX	
73157937	SLIDE ASSY, RH	XX		XX	XX		XX		XX			XX		XX	
93263420	INSULATOR, S1	XX	XX	XX	XX	XX	XX	XX	XX	XX	XX	XX	XX	XX	
94375825	SCREW, 8-16x1/2	XX	XX	XX	XX	XX	XX	XX	XX	XX	XX	XX	XX	XX	
17901517	SCREW, 8-32x1/2	XX	XX	XX	XX	XX	XX	XX	XX	XX	XX	XX	XX	XX	
92905071	SCREW, 8-32x1/4														
92723680	MOUNT, LH														
92723681	MOUNT, RH														
10127121	SCREW 8-32x5/16														
10126402	LOCKWASHER, #8														
10125606	WASHER, #8														
17901509	SCREW, 6-32x3/8														
93402700	BRACKET, Mtg														
93749164	SCREW, 6-32x1/4	XX	XX	XX	XX	XX	XX	XX	XX	XX	XX	XX	XX	XX	
93593164	SCREW, 6-32x1/2	XX	XX	XX	XX	XX	XX	XX	XX	XX	XX	XX	XX	XX	
93263447	BRACKET, CntPan	XX	XX	XX	XX	XX	XX	XX	XX	XX	XX	XX	XX	XX	
93592162	SCREW, 6-32x3/8	XX	XX	XX	XX	XX	XX	XX	XX	XX	XX	XX	XX	XX	
94377000	SEAL	XX	XX	XX	XX	XX	XX	XX	XX	XX	XX	XX	XX	XX	
95243700	FR DOOR ASSY	XX	XX	XX	XX	XX	XX	XX	XX	XX	XX	XX	XX	XX	
94398818	LOGIC PLUG "1"	XX	XX	XX	XX	XX	XX	XX	XX	XX	XX	XX	XX	XX	
94398819	LOGIC PLUG "2"	XX	XX	XX	XX	XX	XX	XX	XX	XX	XX	XX	XX	XX	
94398820	LOGIC PLUG "3"	XX	XX	XX	XX	XX	XX	XX	XX	XX	XX	XX	XX	XX	
93660111	SCREW 10-32x3/8	XX	XX	XX	XX	XX	XX	XX	XX	XX	XX	XX	XX	XX	
10127134	SCREW 10-24x3/4	XX	XX	XX	XX	XX	XX	XX	XX	XX	XX	XX	XX	XX	
94397021	PRODUCT EMBLEM	XX	XX	XX	XX	XX	XX	XX	XX	XX	XX	XX	XX	XX	
94474300	PANEL, Insert	XX	XX	XX	XX	XX	XX	XX	XX	XX	XX	XX	XX	XX	
72852572	FILTER, Primary	XX	XX	XX	XX	XX	XX	XX	XX	XX	XX	XX	XX	XX	
92353800	I/O CABLE KIT	XX	XX	XX	XX	XX	XX	XX	XX	XX	XX	XX	XX	XX	
93270700	TERMINATOR			XX			XX	XX		XX			XX	XX	
94369595	GROUND CABLE	XX	XX												
81537402	I/O (A) CABLE														
92708902	I/O (B) CABLE														

Table Continued on Next Page

TABLE 4-1. OPTIONAL PARTS (Contd)

PART NO.	PART DESCRIPTION	EQUIPMENT PACKAGE 957654xx				
		41	42	43	44	45
72860001	PA3A1A DRIVE	XX	XX	XX	XX	XX
72860002	PA3A2A DRIVE					
72896502	POWER SUPPLY			XX	XX	XX
75168315	AC CABLE P01			XX	XX	
75168317	AC CABLE P01					XX
93991802	DC CABLE P40				XX	XX
93991803	DC CABLE P40		XX			
93991804	DC CABLE P40			XX	XX	XX
73157936	SLIDE ASSY, LH	XX	XX	XX	XX	XX
73157937	SLIDE ASSY, RH	XX	XX	XX	XX	XX
93263420	INSULATOR, S1	XX	XX	XX	XX	XX
94375825	SCREW, 8-16x1/2	XX	XX	XX	XX	XX
17901517	SCREW, 8-32x1/2	XX	XX	XX	XX	XX
92905071	SCREW, 8-32x1/4			XX	XX	XX
92723680	MOUNT, LH			XX	XX	XX
92723681	MOUNT, RH			XX	XX	XX
10127121	SCREW 8-32x5/16			XX	XX	XX
10126402	LOCKWASHER, #8			XX	XX	XX
10125606	WASHER, #8			XX	XX	XX
17901509	SCREW, 6-32x3/8			XX	XX	XX
93402700	BRACKET, Mtg			XX	XX	XX
93749164	SCREW, 6-32x1/4	XX	XX	XX	XX	XX
93593164	SCREW, 6-32x1/2	XX	XX	XX	XX	XX
93263447	BRACKET, CntPan	XX	XX	XX	XX	XX
93592162	SCREW, 6-32x3/8	XX	XX	XX	XX	XX
94377000	SEAL	XX	XX	XX	XX	XX
95243700	FR DOOR ASSY	XX	XX	XX	XX	XX
94398818	LOGIC PLUG "1"	XX	XX	XX	XX	XX
94398819	LOGIC PLUG "2"	XX	XX	XX	XX	XX
94398820	LOGIC PLUG "3"	XX	XX	XX	XX	XX
93660111	SCREW 10-32x3/8	XX	XX	XX	XX	XX
10127134	SCREW 10-24x3/4	XX	XX	XX	XX	XX
94397021	PRODUCT EMBLEM	XX	XX	XX	XX	XX
94474300	PANEL, Insert	XX	XX	XX	XX	XX
72852572	FILTER, Primary	XX	XX	XX	XX	XX
92353800	I/O CABLE KIT	XX	XX	XX	XX	XX
93270700	TERMINATOR	XX	XX	XX	XX	XX
94369595	GROUND CABLE				XX	XX
81537402	I/O (A) CABLE				XX	XX
92708902	I/O (B) CABLE				XX	XX

TABLE 4-2. MANUFACTURER'S RECOMMENDED SPARE PARTS

DESCRIPTION/NOTES	PART NUMBER	REPLACE MENT PART NUMBER
POWER SUPPLY ASSEMBLY		
S/C 04 & Blw	72896501	72896502
S/C 05 & Abv	72896502	72896502
_PGX (READ/WRITE PLO'S) BOARD		
DPGX--S/C 03 & Blw	54332904	54332906
FPGX--S/C 04 & Abv	54332906	54332906
_PFX (DATA LATCH) BOARD		
BPFX--S/C 03 & Blw	54332501	54332503
CPFY--S/C 04 & Abv	54332503	54332503
BPDY (POWER AMP) BOARD	54331701	54331701
_EBN (I/O) BOARD (PA3A1 units only)		
BEBN--S/C 03 & Blw	54020501	54020502
CEBN--S/C 04 & Abv	54020502	54020502
AEDN (I/O) BOARD (PA3A2 units only)	54021300	54021300
CABLE ASSEMBLY P14/P20 (PA3A1 units only)	95276300	95276300
CABLE ASSEMBLY P14/P20 (PA3A2 units only)	95276301	95276301
CABLE ASSEMBLY (P28/P34)	81243100	81243100
DC HARNESS(P19/P21/P22/P35/P36/P37/P38/J40)	93151301	93151301
FILTER, Absolute	72868200	72868200
CPMY (MOTOR SPEED CONTROL) BOARD	54334902	54334902
FAN ASSEMBLY	81235100	81235100
CPBY (OPERATOR PANEL) ASSEMBLY	54330902	54330902
SWITCH	94364400	94364400
SOLENOID, DC	83292733	83292733
SPINDLE ASSEMBLY	72860101	72860101
GROUND SPRING	72865600	72865600
MOTOR AND CABLE ASSEMBLY	94213900	94213900
CPCX (R/W PREAMP) BOARD	54331302	54331302
CARRIAGE ASSEMBLY	72860201	72860201
COIL AND LEAD ASSEMBLY	72863000	72863000
SCREW, Head Arm	75017505	75017505
HEAD ARM ASSEMBLY, Servo	92773402	92773402
HEAD ARM ASSEMBLY, Data Top	92773401	92773401
HEAD ARM ASSEMBLY, Data Bottom	92773400	92773400
BUUN (SERVO PREAMP) BOARD	54007301	54007301
RAIL, Upper	72862600	72862600
RAIL, Lower	72862800	72862800

TABLE 4-3. ACCESSORIES

PART NUMBER	DESCRIPTION
12263496	STATIC GROUND WRIST STRAP, 6 1/2 to 8 inch wrist
12263632	STATIC GROUND WRIST STRAP, up to 6 1/2 inch wrist
12263424	STATIC SHIELDING BAG, 5 x 8 inch
12263625	STATIC SHIELDING BAG, 8 x 12 inch
12263626	STATIC SHIELDING BAG, 10 x 12 inch
12263499	STATIC SHIELDING BAG, 14 x 18 inch
12263627	STATIC SHIELDING BAG, 16 x 24 inch
81537400	I/O A CABLE, 5 foot (1.5 metre) long
81537401	I/O A CABLE, 10 foot (3.0 metre) long
81537402	I/O A CABLE, 15 foot (4.5 metre) long
81537403	I/O A CABLE, 20 foot (6.1 metre) long
81537404	I/O A CABLE, 25 foot (7.6 metre) long
81537405	I/O A CABLE, 30 foot (9.1 metre) long
81537406	I/O A CABLE, 40 foot (12.2 metre) long
81537407	I/O A CABLE, 50 foot (15.3 metre) long
81537408	I/O A CABLE, 100 foot (30.6 metre) long
92708900	I/O B CABLE, 5 foot (1.5 metre) long
92708901	I/O B CABLE, 10 foot (3.0 metre) long
92708902	I/O B CABLE, 15 foot (4.5 metre) long
92708903	I/O B CABLE, 20 foot (6.1 metre) long
92708904	I/O B CABLE, 25 foot (7.6 metre) long
92708905	I/O B CABLE, 30 foot (9.1 metre) long
92708906	I/O B CABLE, 40 foot (12.2 metre) long
92708907	I/O B CABLE, 50 foot (15.3 metre) long
93270700	I/O TERMINATOR
81244502	DRIVE MOUNTING KIT (for mounting drive in a standard rack)
94356700	GROUND STRAP (specify length desired)
40125601	GROUND LUG
10126403	LOCKWASHER, #10 (for grounding)
94398821	LOGIC PLUG, "4"
94398822	LOGIC PLUG, "5"
94398823	LOGIC PLUG, "6"
94398824	LOGIC PLUG, "7"
93991802	DC POWER CABLE, 1 foot (0.3 metre) long
93991803	DC POWER CABLE, 5 foot (1.5 metre) long
93991804	DC POWER CABLE, 8 foot (2.4 metre) long

(

(

(

(

(

(

(